

**KYIV NATIONAL UNIVERSITY OF CONSTRUCTION AND
ARCHITECTURE**

Urban and Spatial Development Faculty

Urban Economy Department

APPROVED BY

Head of the Department

Liubov APOSTOLOVA-SOSSA

„____” _____ 2024

GRADUATION THESIS FOR A MASTERS’S DEGREE

On the topic:

Rural Planning in Bashanzhai Village, Huangpi District, Wuhan City

e

By student of the group 192 UPE

Chen Zhizi

Specialty: 192 Construction and Civil Engineering

Educational program: Urban planning and economy

Supervisor **Alirza Mamedov**

Kyiv 2024

**KYIV NATIONAL UNIVERSITY OF CONSTRUCTION AND
ARCHITECTURE**

Faculty: Urban and Spatial Planning

Department: Urban Economy

Educational level: Master

Area of knowledge: 19 "Architecture and Construction"

Specialty: 192 "Construction and Civil Engineering"

Educational program: Urban planning and economy

APPROVED BY

Dean of the Faculty

Alirza MAMEDOV

« ___ » _____ 2024

**A S S I G N M E N T
FOR COMPLETING THE GRADUATION THESIS
FOR OBTAINING A MASTER'S DEGREE**

Chen Zhizi

1. Topic of thesis: « **Rural Planning in Bashanzhai Village,
Huangpi District, Wuhan City** »

confirmed by the order of the rector of KNUCA № ___
« ___ » _____ 2024

2. Supervisor Alirza Mamedov , candidate of technical sciences,
dosent

3. Deadline for submission of the student's work for defense

4. The content of the thesis by sections:

Introduction

Chapter 1. Analysis of the Current State of Bashanzhai Village

Chapter 2. Development Strategy and Planning

Chapter 3. Action Plan and Implementation Measures

Conclusions

References

5. Graphic material

6. Work schedule:

a) scientific part

b) practical part

Types of works and their content	Execution date
Introduction	
Chapter 1. Analysis of the Current State of Bashanzhai Village	
Chapter 2. Development Strategy and Planning	
Chapter 3. Action Plan and Implementation Measures	
Conclusions	
References	0

7. Consultants of the sections of the attestation graduation work

Section	Last name, initials and position of the consultant	Checked	
		date	signature

8. Date of issue of the assignment _____

Head of the
Department

Liubov Apostolova-Sossa.

(signature)

Supervisor

Alirza Mamedov

(signature)

Student

Chen Zhizi

(signature)

Contents

Introduction	5
Chapter 1. Analysis of the Current State of Bashanzhai Village.....	7
1.1 Spatial Location and Natural Resources.....	7
1.2 Land Use Structure and Demographic Situation	16
1.3 Construction Status and Supporting Infrastructure.....	19
Chapter 2. Development Strategy and Planning	22
2.1 Development Goals and Vision for the Future	22
2.2 Spatial Planning of Rural Areas.....	47
2.3 Development Model and Industrial Structure.....	49
Chapter 3. Action Plan and Implementation Measures	85
3.1 Environmental Remediation Plan	85
3.2 Organization of Innovative Village Management	96
3.3 Key Construction and Cooperation Projects.....	97
Conclusions	105
List of references.....	106

Introduction

Relevance of the study.

The development of rural areas is a key element of sustainable societal progress, especially in the context of modern global challenges such as urbanization, resource depletion, and demographic changes. Bashanzhai Village, located in the Huangpi District of Wuhan City, represents a rural area with significant potential for harmonious development, given its natural resources, geographical location, and cultural heritage. However, challenges such as inefficient land use, weak infrastructure, and demographic shifts call for a clear development plan.

Purpose of the study.

The purpose of this study is to develop a planning strategy for the sustainable development of Bashanzhai Village, considering its unique natural, social, and economic characteristics. The strategy aims to improve the quality of life for residents, preserve ecological balance, and create a competitive rural territory.

Objectives of the study.

1. Analyze the current state of Bashanzhai Village, including its spatial location, natural resources, demographic situation, land use, and infrastructure.
2. Define the development goals and vision, and propose strategies for spatial planning and industrial structure.
3. Suggest specific measures for environmental remediation, innovative management implementation, and realization of key projects.

Object of the study.

The rural area of Bashanzhai Village, its natural, geographical, socio-economic, and infrastructural characteristics.

Subject of the study.

Processes of planning and implementing sustainable rural development strategies, using Bashanzhai Village as a case study.

Methods of the study.

The study employs methods of analysis and synthesis, a systematic approach, cartographic analysis, field research, sociological surveys, and economic-statistical tools to evaluate the potential and current state of the territory.

Overview of scientific research.

The theoretical foundations of rural planning have been explored by numerous researchers, including:

- Friedrich Ratzel, whose concept of geographical determinism laid the groundwork for analyzing the impact of natural resources on rural development.
- Ebenezer Howard, with his "garden city" concept, emphasized the harmonious integration of natural, social, and economic factors in planning.
- In the Chinese context, notable contributions include Li Xiaojun, who studied rural development strategies in various Chinese provinces, and Zhang Yuan, whose work focused on the integration of agricultural and tourism sectors.

This study builds upon these scientific approaches and provides practical recommendations tailored to Bashanzhai Village.

Chapter 1. Analysis of the Current State of Bashanzhai Village

1.1 Spatial Location and Natural Resources

The Central Committee of the Communist Party of China and the State Council have issued the "Strategic Plan for Rural Revitalization (2018-2022)", which states that Rural areas are geographical complexes with natural, social, and economic characteristics, serving multiple functions such as production, life, ecology, and culture. They promote and coexist with urban areas, forming the main space for human activities. Rural prosperity leads to national prosperity, while rural decline leads to national decline. The contradiction between the growing needs of our people for a better life and the unbalanced and inadequate development is most prominent in the countryside. To a large extent, China is still in the primary stage of socialism and will remain in the countryside for a long time. The most arduous and heavy task of comprehensively building a moderately prosperous society and a socialist modernized country lies in the rural areas, with the widest and deepest foundation, and the greatest potential and momentum. The implementation of the rural revitalization strategy is an inevitable requirement for solving the main contradictions in Chinese society in the new era, achieving the "Two Centenary Goals" and the great rejuvenation of the Chinese nation. It has significant practical and far-reaching historical significance.

The implementation of the rural revitalization strategy is an important foundation for building a modern economic system. Agriculture is the foundation of the national economy, and rural economy is an important component of the modern economic system. Rural revitalization and industrial prosperity are the key points. Implementing the rural revitalization strategy, deepening the structural reform of the agricultural supply side, constructing a modern agricultural industry system, production system, and management

system, and achieving deep integration and development of the primary, secondary, and tertiary industries in rural areas are conducive to promoting the shift of agriculture from a focus on increasing production to a focus on improving quality, enhancing China's agricultural innovation and competitiveness, and laying a solid foundation for building a modern economic system.

Implementing the rural revitalization strategy is a key measure for building a beautiful China. Agriculture is an important supplier of ecological products, and rural areas are the main areas for ecological conservation. Ecology is the biggest development advantage of rural areas. The key to rural revitalization is ecological livability. Implementing the strategy of rural revitalization, coordinating the management of mountains, waters, forests, fields, lakes, and grasslands, accelerating the implementation of green development in rural areas, strengthening the improvement of rural living environment, is conducive to building a new pattern of rural development where humans and nature coexist harmoniously, and achieving the unity of people's wealth and ecological beauty.

Implementing the rural revitalization strategy is an effective way to inherit excellent traditional Chinese culture. Chinese civilization is rooted in agricultural culture, and rural areas are the basic carriers of Chinese civilization. Rural revitalization and civilized rural culture are guarantees. Implementing the rural revitalization strategy, deeply exploring the excellent ideological concepts, humanistic spirit, and moral norms contained in agricultural culture, and creatively transforming and innovating development on the basis of protecting and inheriting them in accordance with the requirements of the times, is conducive to radiating a new atmosphere of rural civilization in the new era, further enriching and inheriting the excellent traditional Chinese culture.

Implementing the rural revitalization strategy is a fundamental strategy for improving the modern social governance pattern. The foundation of social

governance lies at the grassroots level, with weak links in rural areas. Effective governance is the foundation for rural revitalization. Implementing the rural revitalization strategy, strengthening grassroots work in rural areas, improving the rural governance system, ensuring that farmers live and work in peace and contentment, and rural society is stable and orderly, is conducive to building a modern social governance pattern of co construction, co governance, and sharing, and promoting the modernization of the national governance system and governance capacity.

Implementing the rural revitalization strategy is an inevitable choice to achieve common prosperity for all people. Whether agriculture is strong or not, whether rural areas are beautiful or not, and whether farmers are rich or not are related to the sense of gain, happiness, and security of billions of farmers, and to the overall goal of building a moderately prosperous society in all respects. Rural revitalization and affluent living are fundamental. Implementing the strategy of rural revitalization, continuously expanding channels for increasing farmers' income, comprehensively improving rural production and living conditions, promoting social fairness and justice, is conducive to enhancing farmers' well-being, enabling billions of farmers to embark on the path of common prosperity, and gathering the magnificent force of building a socialist modernized strong country.

2. At the level of Hubei Province

In 2024, the Implementation Opinions of the Hubei Provincial Committee of the Communist Party of China and the Hubei Provincial People's Government on Learning and Applying the Experience of the "Thousand Village Demonstration and Ten Thousand Village Rectification" Project to Effectively Promote the Comprehensive Revitalization of Rural Areas with the Strong County Project as the Key Point were issued, which pointed out that Strengthen the basic modern living conditions in rural areas and improve the level of rural construction

In recent years, positive progress has been made in rural construction in various regions, with significant improvements in rural infrastructure and public services. However, there are still many weak links. The No.1 document of the Provincial Party Committee emphasizes the goal of "basic modern living conditions in rural areas", starting from the actual situation in various regions and the needs of farmers, seizing the opportunity to promote universal access, and improving the level of rural construction.

Strengthen planning guidance. Adhere to the strategy of county-level planning and construction, based on the characteristics of rural areas, adapt to the trend of population changes, optimize village layout, industrial structure, and public service allocation, and meet the needs of modern agricultural production. Classify and prepare village planning, strengthen the effectiveness, operability, and execution constraints of planning, ensure that there is a real need, it can be implemented, and it is truly effective, and cannot be compiled for the sake of compilation. Establish a sound mechanism for village planning and development, allowing farmers to participate throughout the entire process.

Accelerate the filling of shortcomings. Focus on the shortcomings and weaknesses, make a list, solve them one by one, and respond promptly to the concerns of farmers and the masses. We will coordinate and promote the construction of rural infrastructure such as water, electricity, gas, housing, and communication, and continuously improve the level of public services such as education, medical care, and elderly care. Rectify and improve the living environment in rural areas, and carry out regular village cleaning actions. Solidly promote comprehensive management of small watersheds, promote "ecological beauty, strong industries, and prosperity of the people".

Promote urban-rural integration. Coordinate the development of new urbanization and comprehensive rural revitalization, and promote the synchronous development of the four modernizations based on comprehensive watershed management. Accelerate the in-situ urbanization with county towns

as important carriers, deepen the pilot program of high-quality development of urban and industrial concentration, and promote breakthrough development of county-level economy.

Gather strength, deepen cooperation, create and lead the improvement of rural governance level Effective governance is an important guarantee for rural revitalization. We must adhere to the guidance of Party building and focus on grassroots development, deepen the promotion of Party building to promote rural revitalization, improve the rural governance system that combines autonomy, rule of law, and moral governance under the leadership of Party organizations, and continuously improve the level of good governance in rural areas.

Strengthen the construction of grassroots organizations in rural areas. Strengthen the responsibility of county-level party committees to promote rural areas and villages, and deepen the practical activities of party members and cadres to "go to the grassroots, investigate the people's situation, solve people's worries, and warm the hearts of the people" through the joint creation of a beautiful environment and a happy life. Establish a sound village level organizational system under the leadership of village party organizations, strengthen open and democratic management of village affairs, and promote grid based management and refined services at the village level.

Strengthen the construction of rural spiritual civilization. Promote the extension of civilization practice to villages, markets and other peripheral areas, and facilitate the sinking of high-quality cultural resources in cities. Regularly carry out cultural activities that benefit the people, implement rural cultural relic protection projects, and strengthen the promotion of Jingchu agricultural culture. Continuously promote the transformation of customs and traditions in rural areas, and promote the formation of civilized rural customs, good family traditions, and simple rural customs.

3. At the level of Wuhan city

The three-year action plan for promoting the construction of beautiful rural areas in Wuhan (2021-2023) proposes to comprehensively implement the socialist ideology with Chinese characteristics in the new era, closely focusing on the overall layout of coordinating the promotion of the "Five in One" and the coordinated promotion of the "Four Comprehensives" strategic layout. In accordance with the overall requirements of "prosperous industries, livable ecology, civilized rural culture, effective governance, and prosperous life", we will increase the coordinated development of urban and rural areas in our city, tap into the driving force of rural development, promote the construction of beautiful rural areas with high starting points, high standards, and high levels, comprehensively improve the level of rural ecological environment, infrastructure, and public services, focus on building a refined agricultural industry system, modern rural governance system, and diversified rural development system, comprehensively consolidate the achievements of a moderately prosperous society in rural areas, and comprehensively implement the rural revitalization strategy, Establishing a solid foundation for the modernization of agriculture and rural areas.

3.1 Basic principles

3.1.1 Plan ahead, promote by classification. Adhere to the principle of "planning first, construction later" to promote the construction of beautiful countryside. Each new urban area should combine the requirements of village planning system and industrial development spatial layout, further improve village planning, and guide the construction of beautiful countryside. Tailored to local conditions, overall planning, and classified implementation, with a focus on preserving and expanding new types of village bays, promoting the upgrading of beautiful rural construction, and advancing the improvement of rural living environment in controlled village bays.

3.1.2 Enhance industries and ensure people's livelihoods. Emphasis will be placed on promoting the quality and efficiency improvement of modern agriculture, promoting the extension of the agricultural industry chain and the integrated development of the primary, secondary, and tertiary industries in rural areas, and stimulating the vitality of the rural economy. Respect the wishes of farmers, safeguard their rights and interests, highlight the principle of enriching the people, enhance the well-being of farmers, continuously strengthen rural collective economy, and increase farmers' income.

3.1.3 Strengthen the foundation and focus on distinctive features. Intensify efforts in ecological governance and protection, strengthen the improvement of rural living environment, scientifically formulate construction management and operation plans for beautiful rural construction projects, consolidate the foundation of rural development, highlight rural cultural elements and rural charm, and highlight rural characteristics.

3.1.4 Persist in innovation and improve mechanisms. Firmly establish innovative concepts, adhere to demand-oriented, problem oriented, and effect oriented approaches, and accelerate the establishment of urban-rural coordination mechanisms and policy systems. Give full play to the pioneering spirit of farmers, establish and improve mechanisms for government, village collectives, villagers, market entities and other parties to jointly build, govern and share.

3.2 Work objectives

In accordance with the overall requirements of implementing the rural revitalization strategy, with the fundamental goal of strengthening agriculture, beautifying rural areas, and enriching farmers, and based on the improvement of rural living environment and the construction of beautiful countryside in the early stage, the "23456 Project" will be implemented through comprehensive improvement, contiguous construction, radiating and driving, and regional demonstration. Through three years of efforts, we will strive to create more

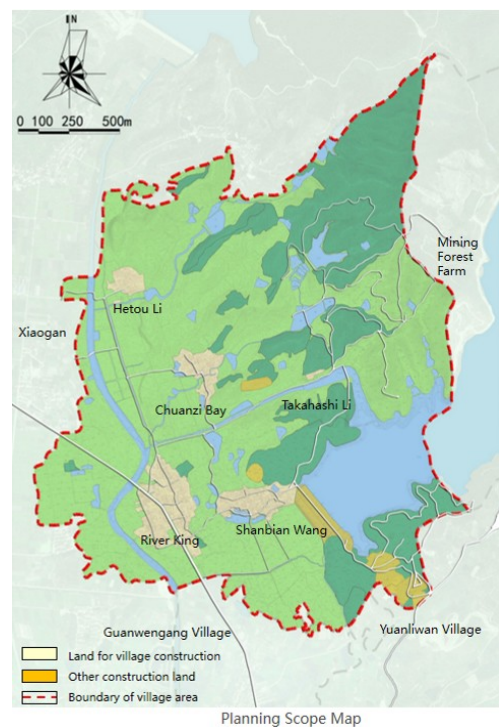
than 2 beautiful countryside demonstration areas, more than 30 beautiful countryside demonstration belts, more than 40 rural leisure and tourism demonstration villages, more than 50 exquisite agricultural demonstration points, and more than 600 beautiful countryside demonstration villages, and build a beautiful countryside blueprint that is "outstanding on the spot, new on the surface, scenic on the belt, and fully spread".

4.brief summary

In this context, we need to comprehensively innovate the methods of village planning and explore the path of coordinated development between urbanization in mega cities and the construction of new rural areas.

Planning Area

The village planning for this project is bounded by the administrative village area of Bashashan, including 5 natural village bays and 7 village groups, with a total planned area of 373.4 hectares.



Work ideas

The main focus of this planning work is on two aspects: innovative work methods and innovative planning techniques. Firstly, the basic conditions and

key issues are identified through current situation analysis; Secondly, target analysis and strategy analysis are conducted to propose development goals and strategies for the problem; Afterwards, the plan will be implemented through action plans and environmental governance plans; Finally, policy guarantees will be used to reconstruct the rural management order system.



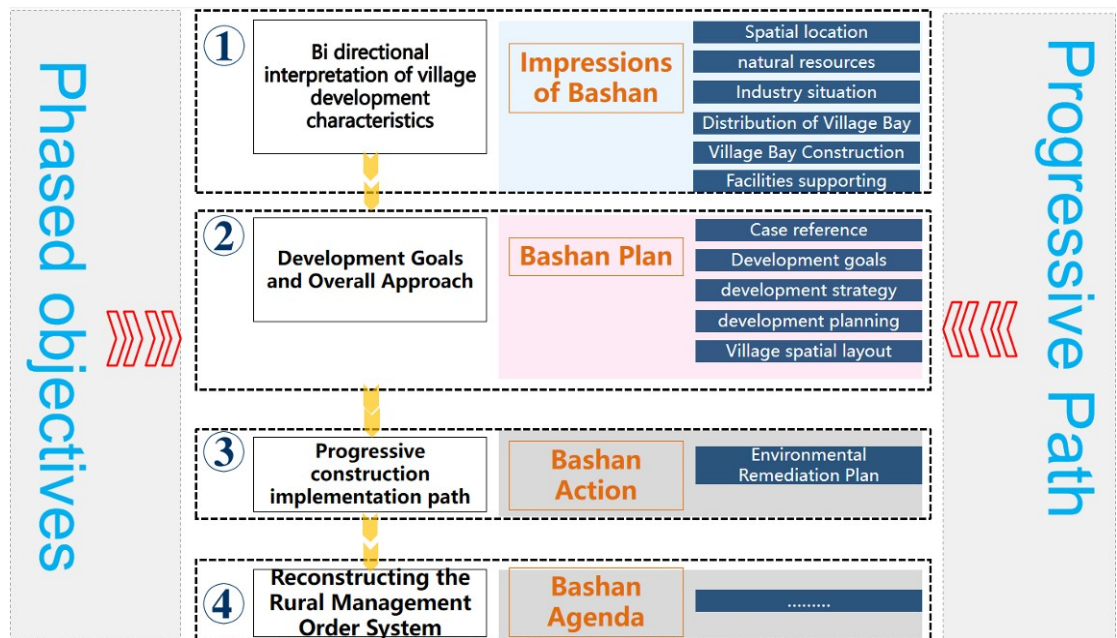
way of working

The work organization adopts a "offline+online" approach, conducting on-site surveys of the entire village to understand the current situation, background elements, and existing problems. At the same time, household surveys are conducted, and targeted questionnaires are designed to understand the living conditions of villagers and the urgent problems and difficulties that need to be solved. The overall mobilization series activity plan for Bashan is simultaneously released online through WeChat, allowing people from all walks of life to further understand Bashan, be aware of Bashan, and be willing to participate in the planning and construction of beautiful rural areas in Bashan. The establishment of WeChat groups allows villagers to provide

suggestions and ideas for rural construction, actively participate in planning, design, and construction.

technology roadmap

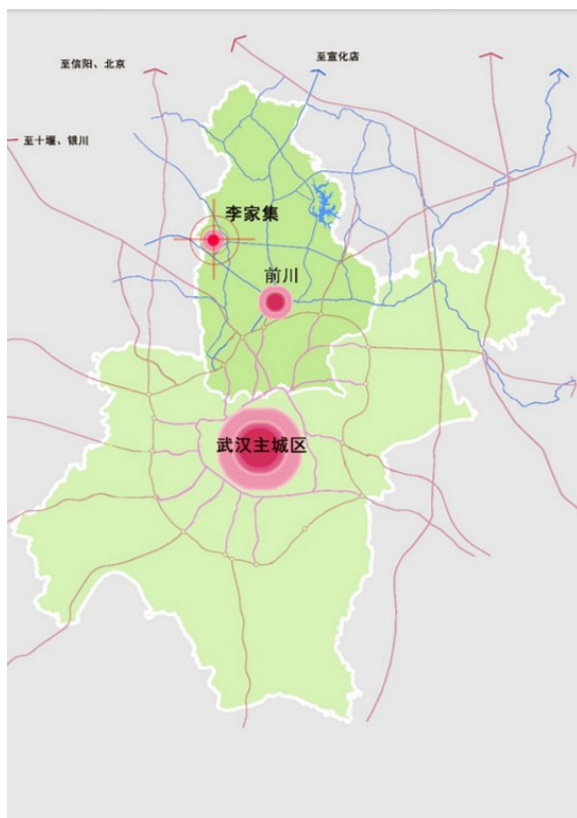
This plan adopts a phased goal and progressive path approach to achieve. In the first stage, the development characteristics of the village are interpreted in both directions. The impression of Bashan includes location, natural resources, industrial situation, village bend distribution, and supporting facilities; In the second stage, the development goals and overall ideas are clearly defined. The Bashan Plan includes case studies, development goals, development strategies, development plans, and village spatial layout; The third stage proposes a gradual construction implementation path, and the Bashan Action Plan includes action plans, environmental remediation plans, and other contents; The fourth stage of the Bashan agenda aims to reconstruct the order and system of rural management, ensuring the implementation of beautiful rural planning.



Planning Technology Roadmap

1.2 Land Use Structure and Demographic Situation

Kouzi Village in the outskirts of Wuhan, adjacent to the Yunwu Mountain Scenic Area Located in the northern part of Lijiaji Street, Huangpi District, Wuhan City, at the junction of Xiaogan and Wuhan, only 60 kilometers away from the central urban area of Wuhan and 35 kilometers away from Wuhan Tianhe Airport, it belongs to the outskirts of Wuhan City. The Qipao Line passes through the village and is 18 kilometers away from Huangxiao Road, leading directly to Qianchuan New City. The transportation is very convenient and the location advantage is prominent. Located at the source of Huangxiao River, separated from Xiaogan by a narrow strip of water; The villagers have a strong sense of superiority, and the southeast corner of the village is adjacent to the Yunwu Mountain Scenic Area. The conditions for regional tourism development are relatively mature.



Lijiaji Street is located in the area of Wuhan City

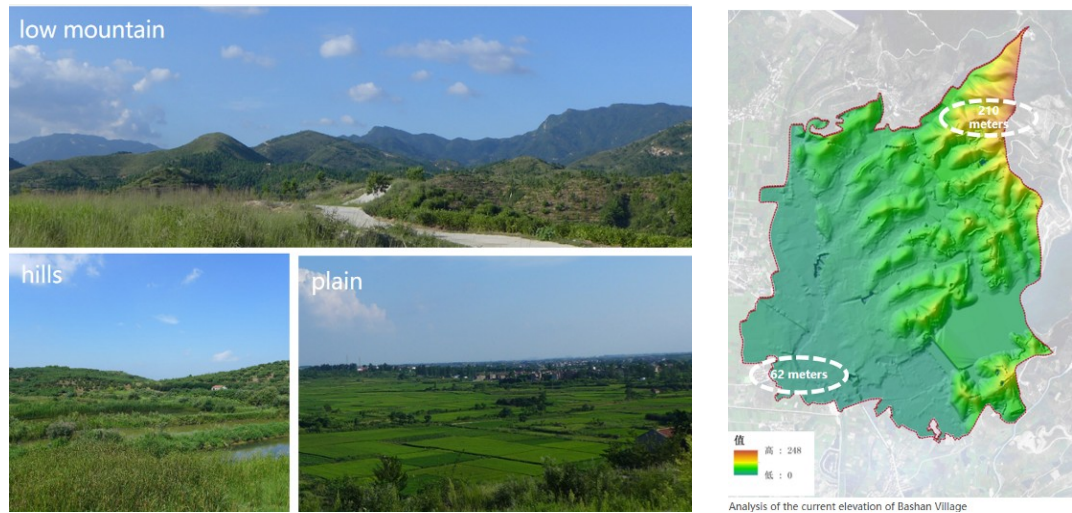


Traffic Analysis Map of Bashan Village

natural resources

1.topographic features

The overall terrain transitions from low mountains and hills to plains from northeast to southwest, and the village area has a relatively large height difference, with the highest point located in the northeast low mountainous area.



2. Terrain and landforms transition from low mountains to plains

mountain: The mountainous area accounts for about 13% of the village's total area, mainly located in the northeast of the village.

water: Abundant water resources and good water quality, with water area accounting for 20% of the total land area.

field: Cultivated land resources are scarce and diverse in types. The total area of arable land in the village is 832 mu, with an average of about 0.5 mu per person.



1.3 Construction Status and Supporting Infrastructure

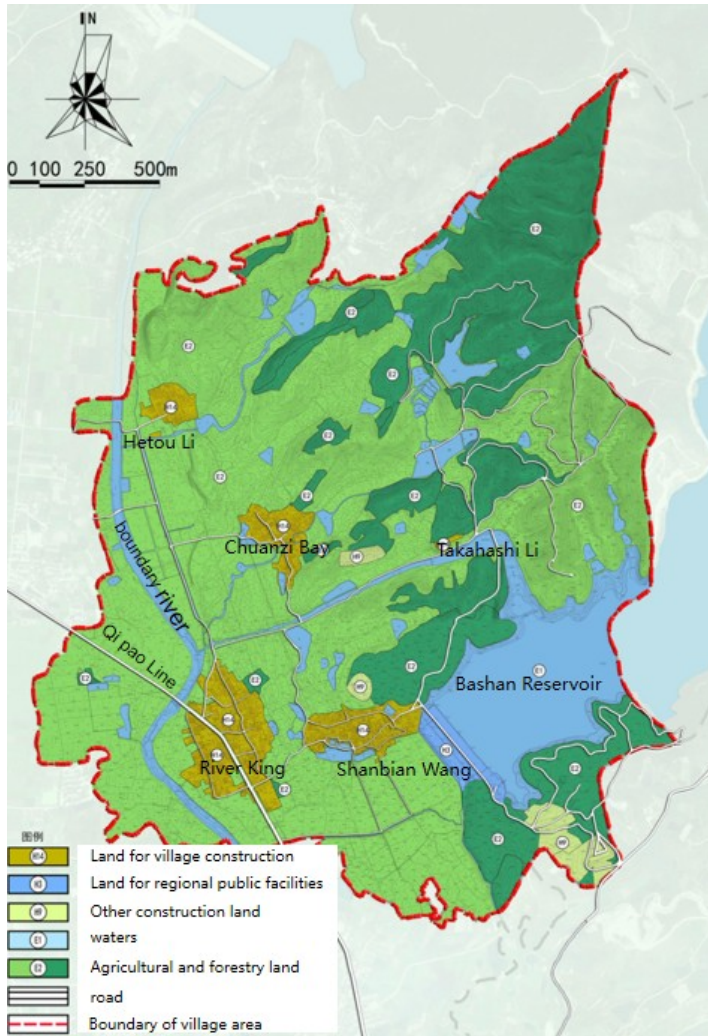
Land use situation

The current total area of the village is 373.4 hectares, with an agricultural and forestry land area of 263.5 hectares, accounting for 70.5% of the total area of the village. Among them, the cultivated land area is 104.17 hectares, accounting for 27.90% of the total area of the village. The water area is about 77.1 hectares, accounting for 20.6% of the total land area of the village.

The current construction land is about 31.3 hectares, accounting for 8.4% of the total area of the village, of which the village construction land is about 19.9 hectares, with an average of 117.1 square meters per person.

Mainly consisting of farmland and forest land, construction land is scattered around the means of production.

code	land usage	Land use type	Area (hectares)	Proportion (%)	Per capita (square meters)
H14	Land for village construction	Land for village construction	19.9	5.3	117.1
H2	Land for regional transportation facilities	right of way	3.1	0.8	18.2
H3	Land for regional public facilities	Land for water conservancy facilities and funeral facilities	4.5	1.2	26.5
H9	Other construction land	Land for scenic tourist areas	3.8	1.0	22.4
Subtotal of construction land			31.3	8.4	184.1
E2	Agricultural and forestry land	woodland	50.9	13.6	299.4
		cultivated land	212.6	56.9	1250.6
E1	waters	Reservoirs, rivers, ponds, ditches, and canals	77.1	20.6	453.5
amount to			373.4	100.0	2196.5



Current Land Use Status Map of Bashanzhai Village

Chapter 2. Development Strategy and Planning

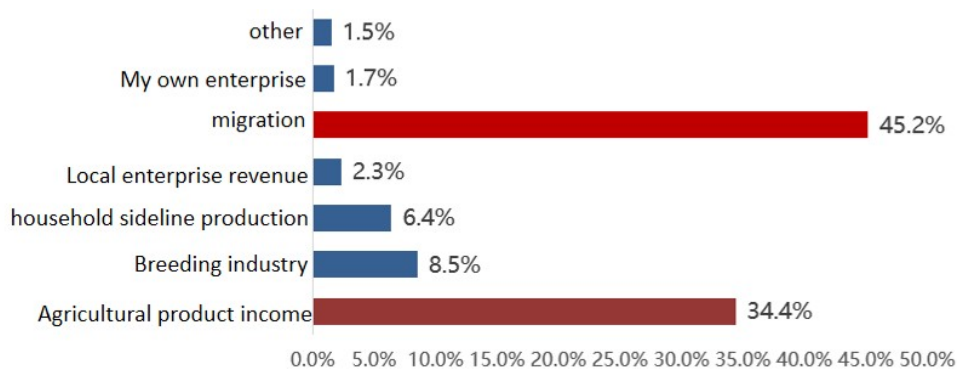
2.1 Development Goals and Vision for the Future

Industrial Economy

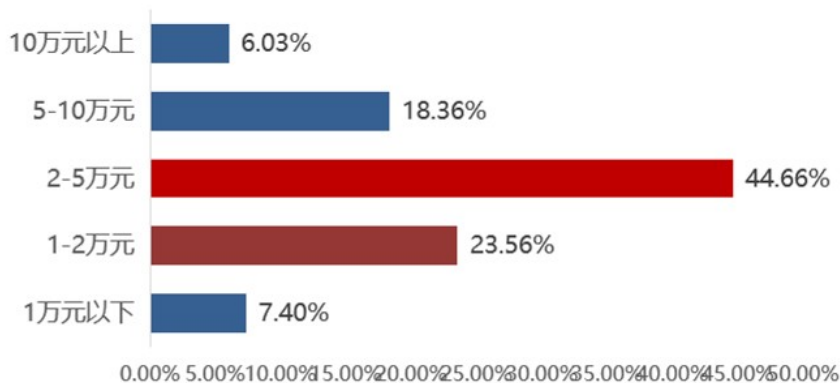
The labor economy dominates in the income of villagers, and the income of farmers is lower than the city average.

In 2023, the per capita disposable income of farmers in Bashanzhai Village will be 13700 yuan, which is lower than the city's per capita standard of 16160 yuan. The majority of income comes from working outside the home, accounting for about 45%; However, agricultural product income only accounts for about 30%.

The highest number of respondents have an annual household income of 20000 to 50000 yuan, and the common sources of income are migrant work and agricultural product management; The income group of 10000 to 20000 yuan is mostly pure agricultural product income or livestock income.



Main sources of income for the respondents



Annual average household income of respondents

2. Agriculture is mainly based on traditional agriculture, and the advantages of characteristic agriculture are not prominent

Traditional rice and grain and oil cultivation: As the main form of agricultural planting, it accounts for 60% of the total planting area. Traditional rice planting has a yield of about 800-1000 yuan per mu and a net income of about 400-500 yuan.

Tea cultivation: The planting types include oil tea, green tea, and black tea. The "Mulan Tianxiang" tea base has begun to take shape, with an existing area of 1500 acres. Farmers have scattered cultivation of oil tea, but the scale is small and the business situation is unstable.

Fruit tree planting: Mainly peach, Dahong peach has a certain degree of popularity, mainly planted in the western border river banks and the eastern low mountain and hilly areas. The current total planting area is about 400 acres, and the current economic benefits are good.

Nursery planting: A small number of people determine their sales channels through their own interpersonal relationships and then supply them in a targeted manner, resulting in a smaller scale of cultivation.

Livestock and poultry breeding industry: There is currently a chicken farm next to the Poyan Reservoir and a relatively small pig farm (400-500 heads) in Liyou, Gaoqiao.

Crop type	Area (mu)	Proportion (%)
orchard	382.7	14.5
tea garden	583.2	22.1
nursery	110.4	4.2
cultivated land	1562.6	59.2

amount to	2638.8	100.0
-----------	--------	-------

3. Family based agricultural production occupies a dominant position in villages, and farmers have a higher willingness to engage in non-agricultural employment in the future.

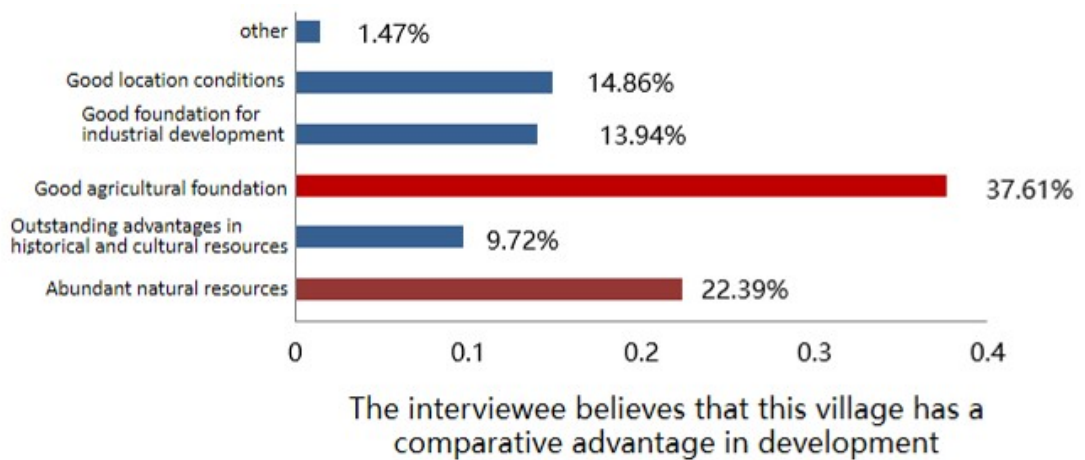
Most of the respondents' households are engaged in farming, with 83% of them farming themselves and only 10% outsourcing farming. From this, it can be seen that there is relatively little land transfer in the local area, and traditional small-scale household operations are the main focus, resulting in a slower process of agricultural modernization.

The cultivation radius is mostly within one kilometer, and the phenomenon of interdependence between villages and fields is obvious.

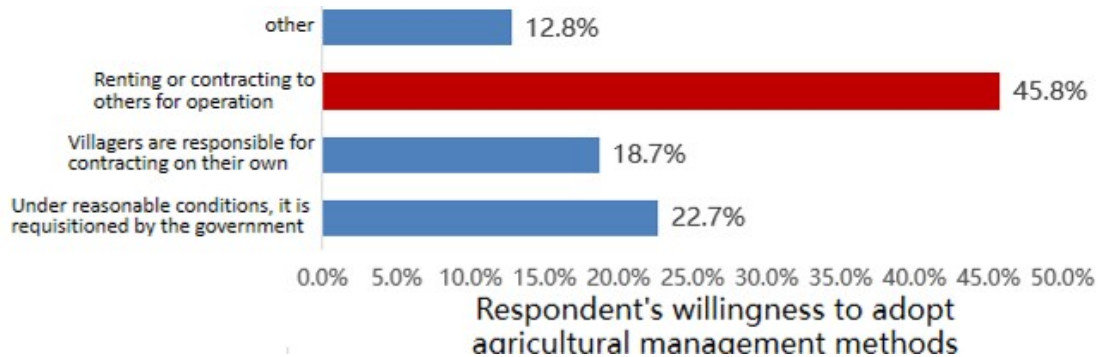
Under the promotion of land transfer, farmers have a high willingness to engage in non-agricultural employment in the future.

The respondents' most preferred workplace is the village, followed by the town, and finally the city. The willingness to work location has a significant impact on whether to be with family, income situation, work environment, and opportunities.

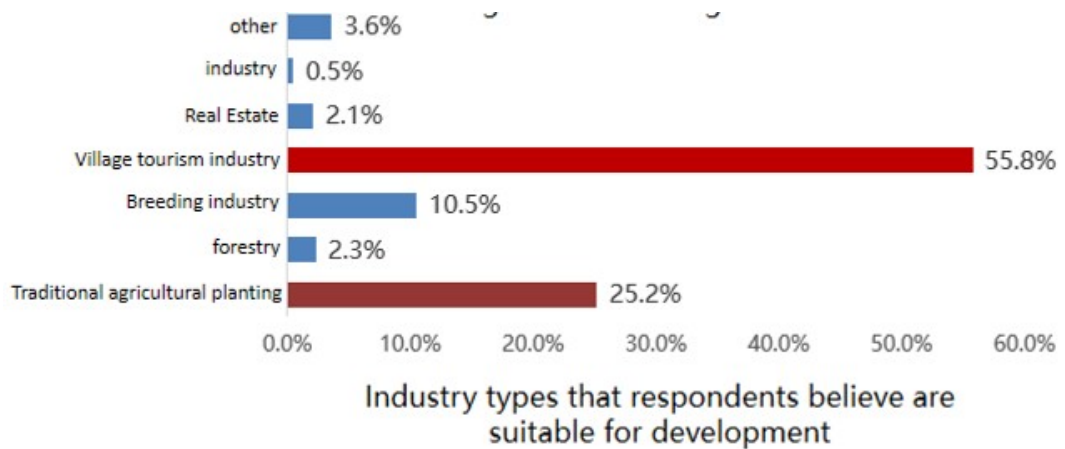
Most people believe that the agricultural foundation of this village is good, indicating that there is potential for further modernization of agricultural production in the region in the future.



The current method of cultivating land (only for households with cultivated land) is mainly self operated; In the future, 45.8% of respondents are willing to rent or contract their farmland to others for operation.



22% of respondents believe that natural resources are abundant, while 9.7% believe that historical and cultural resources have outstanding advantages. More than half of the respondents (55.8%) believe that Bashan Village is suitable for developing rural tourism in the future.



Distribution of Village Bay

There are a total of 5 natural village bays in the village area, among which Gaoqiao Liyuyu Reservoir has been relocated and is currently uninhabited; Only Shanbian Wang's per capita village construction land quota is lower than Wuhan's per capita village construction land quota (120 square meters/person) in other villages.

Their spatial clustering characteristics are relatively obvious, and they have a strong awareness of the social characteristics of clan relationships.

Without strong external forces to promote and guide them, they are unwilling to move and live together.

Village name	Households (Household)	Population (Person)	Land area for village construction (hectares)	Household average (square meters)	Per capita (square meters)
Shanbian Wang	118	512	5.0	423.7	97.7
River King	173	732	9.1	526.0	124.3
Chuanzi Bay	72	305	3.7	513.9	121.3
Hetou Li	39	153	1.9	487.2	124.2
Takahashi Li	—	—	—	—	—
amount to	402	1702	19.9	495.0	116.9

Population situation

1. The total labor force is sufficient, and the proportion of migrant families is relatively large

In 2023, there will be 402 households and 1702 people in 5 natural villages within the village area.

The total number of labor force is 834, accounting for 48.5% of the total number, indicating sufficient labor force; Among them, there are 336 people engaged in agricultural production, accounting for 40.3%, with a per capita

cultivated area of about 4.5 acres, reflecting that agricultural labor still has the potential to be released.

Statistical Table of Labor Force in Bashanzhai Village in 2023

	Pri mary pro duction	Sec ondary in dustry	tertiary in dustry	amount to
Population (person)	336	256	242	834
Proportion (%)	40.3	30.7	29.0	100

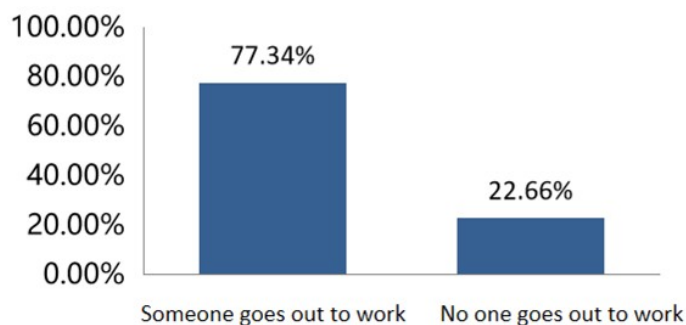
The total population of migrant workers is 508, accounting for 29.8% of the total population in the village, with approximately 1.3 people per household.

Statistical Table of Population Outward Situation in Bashanzhai Village in 2023

name	hou seholds (Househol d)	popu lation(Person)	Numb of people goi ng out (perso n)	Aver age outbou nd populati on per hous ehold	Proport ion of people going out (%)
Shanbi an Wang	118	512	178	1.5	34.8
River King	173	732	202	1.2	27.6
Chuan zi Bay	72	305	85	1.2	27.9
Hetou Li	39	153	43	1.1	28.1

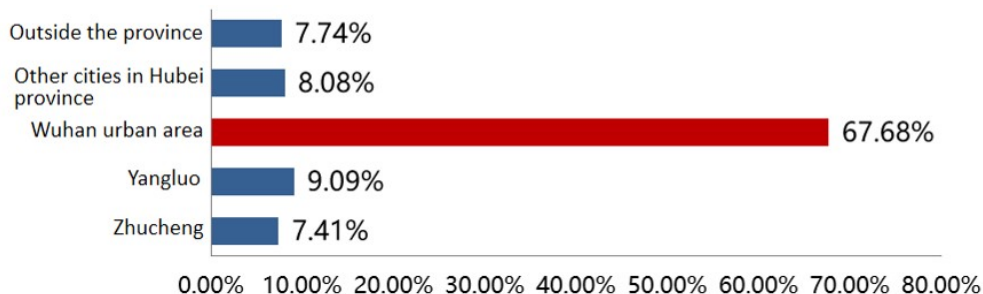
amount	402	17	508	1.3	29.8
t to	02				

The vast majority of respondents have people working outside their homes, with 77% of households having people working outside, and the remaining households with no one working outside are mostly engaged in traditional agriculture.



Analysis of the situation of interviewees going out for work

Wuhan has become the preferred destination for migrant workers, surpassing the sum of other regions.



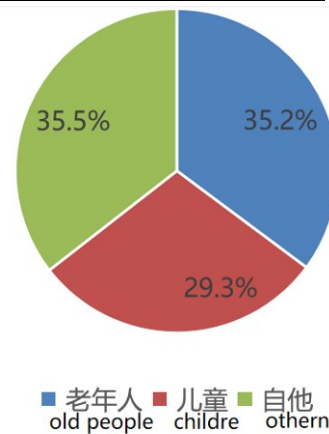
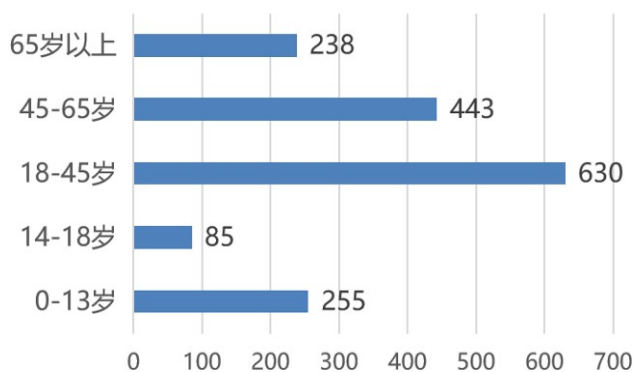
Analysis of the location of migrant work for the respondents' families

2. Serious aging population phenomenon

The phenomenon of aging population in villages is severe, showing a clear declining structure. 13% of the population aged 65 and above has entered an aging society.

age group	0-13	14-17	18-44	45-64	65 or above
Number of	25	85	630	44	238

people	5			3	
Proportion (%)	15.1%	5.2%	36.7%	26.4%	13.6%



Distribution of Population Composition in Village Bay

Age composition of left behind population in Cunwan

The age of the migrant population is concentrated between 20-40 years old, while the left behind population is mainly composed of elderly and children, accounting for 64.5% of the left behind population. Young people leave far away, and their hometown becomes a world for the elderly and children!

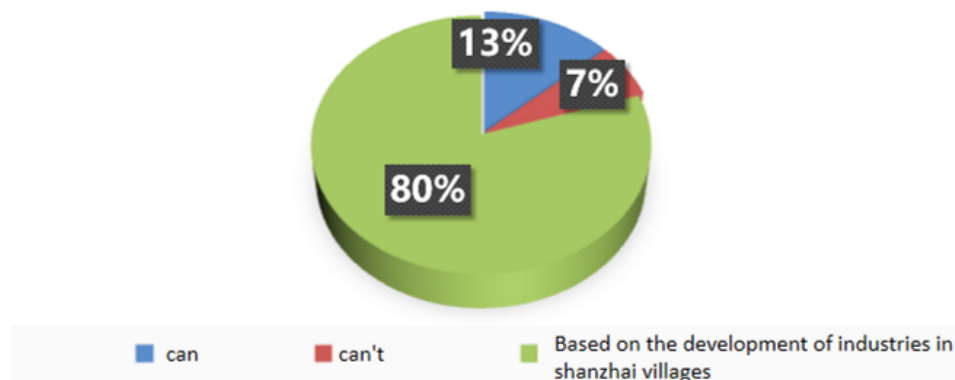
total population	1702	Left behind population	1194	70.2%	old people	422	35.2
					children	351	29.3
					subtotal	773	64.5
					others	421	35.5
	Outward population	508	29.8%	The majority of people who go out are between the ages of 20 and 40			

3. Income level is a key factor determining population return

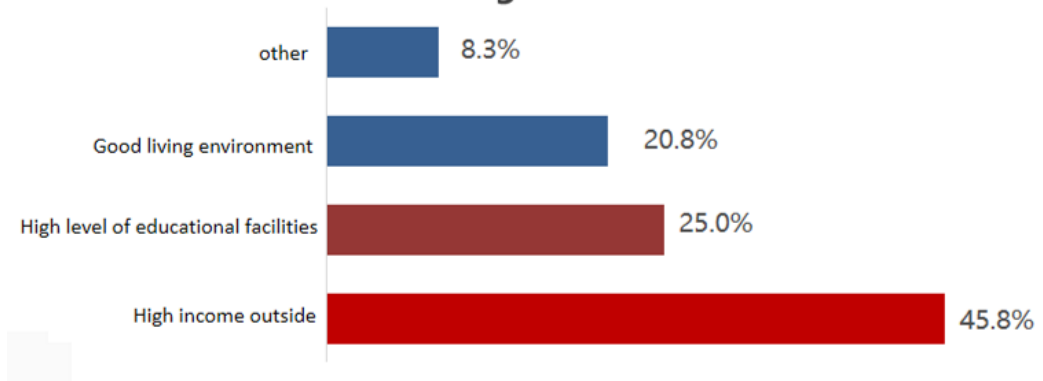
The survey results of migrant workers show that 80% of the respondents' return to work is closely related to the development of industries in Bashan village.

Among the reasons for not returning to the village, income accounts for 45.8%, which is the main factor affecting whether to return; Secondly, there are reasons for supporting facilities such as education.

Will they return to Bashan Village?



The main reason for not returning to Bashan Village



Construction Status of Village Bay

1. Spatial pattern of each village bay

Through the investigation of the current situation in various rural areas, it has been found that there are variations in similarities. The specific pattern analysis of each village is as follows:

Shanwangbian Village is located in the northeast facing the mountains and has ponds in the southern area. The entire village presents a spatial structure system of a mountain ring road and alleys, with a compact land layout and buildings facing north and south. There is limited available space within the village.



Chuanziwan Village presents a branching spatial pattern system, with mountains in the east and southeast, water in the west, southwest, and east, and streams passing through the village. Buildings are spontaneously arranged along the roads.



Riverside Wang Village adopts a clustered and fishbone shaped (feng shaped) spatial structure system, with expressways dividing the village and buildings concentrated along the road.



Li Village in Hetou faces mountains in the east and water in the south. The entire village has a relatively small building scale and presents a centralized pattern, with only one road connecting to the outside.



Gaoqiao Li Village is small in scale, with a few scattered households. The village faces mountains in the north and water in the south, with a road passing through the village.



2. building condition

Mixed old and new, some distinctive architectural styles are prominent. Mixing of old and new buildings in various villages and bays of

Bashan Village: One type of building is mostly brick concrete or steel-concrete structure, with good building quality. It was built in the past 10 years and accounts for 45% of the total.

Class II buildings are mostly brick and wood structures, with a construction time of over 10 years and average building quality, accounting for 30%. Most of the three types of buildings are civil and stone wood structures, with traditional styles still present, but the building quality is poor. Most of the three types of buildings are abandoned and uninhabited, and a small number of them are still inhabited, posing safety hazards, accounting for 25%.

Characteristic buildings: The distinctive architectural style of Mulan dry masonry in each village bay is remarkable, and historical memories still exist. Among them, Shanbian Wang still preserves a well preserved building of the brigade commune during the commune period.

Villagers' wishes: From the selection activity of Impression Photos in Bashan, it can be seen that both villagers and the public have a high enthusiasm for the unique stone houses in Shiyuan.

Through on-site interviews with offline village representatives and door-to-door interviews, it was found that villagers generally have no requirements for a unified architectural style, and support the demolition of abandoned and uninhabited old houses within the village for the construction of public activity spaces.



Are you willing to demolish your old house after building a new one?

What are you willing to use the land from the demolition of an old house for?

The old house is very dilapidated, willing to demolish it and do something else



Planting trees and vegetables is fine. If there is a lack of activity venues in the village, dance and exercise venues can also be built, but compensation should still be given for whose house is used.



一类建筑



二类建筑



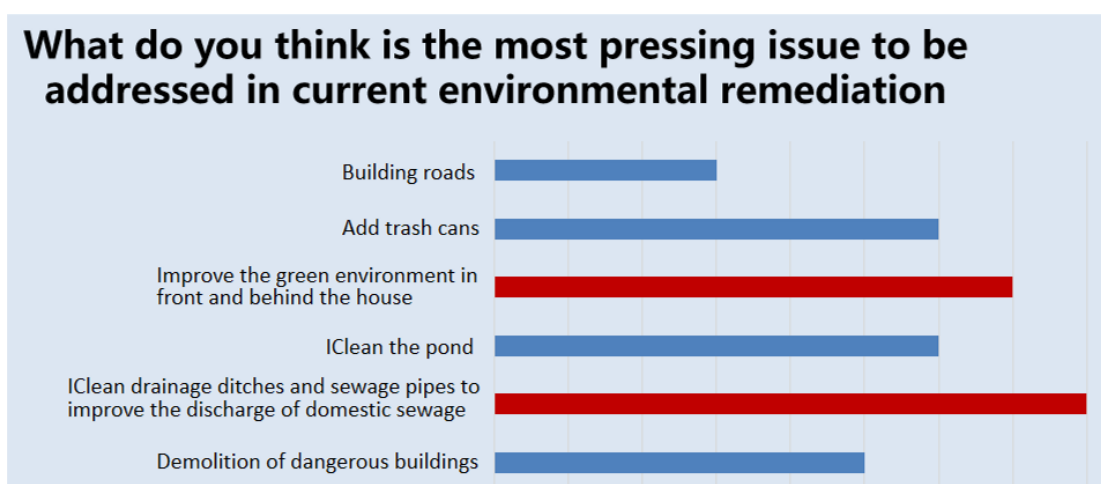
三类建筑

3.Environmental conditions of the village

The demand for environmental improvement in the village bay is very urgent.Garbage Collection: There are multiple centralized garbage collection points within the village area, but the facilities are simple and the garbage is piled up outdoors. Currently, garbage cleaners have been equipped in each village bay.

Environment in front and behind the house: The situation in front of the villagers' homes is relatively good, but the stacking of miscellaneous items in public areas is prominent.

Villagers' willingness: The results of on-site interviews with offline village representatives and door-to-door interviews, as well as online public opinion surveys, indicate that villagers believe that the current urgent issues facing the village environment include garbage disposal, river and pond cleaning, and public activity space improvement. Secondly, most villagers are willing to work hard to improve the environment in front of and behind their homes, but the government needs to provide certain subsidies.



Current situation of garbage pool



Storage of miscellaneous items in front and behind the house



Current status of supporting facilities

The level of facility services is low, and the problem of sewage and waste treatment is prominent.

1.Public service facilities

The current service facilities in the village area are only one village committee, and there are no primary schools, clinics, or other facilities available. Villagers mostly use nearby facilities for education and medical treatment.

The current situation is a lack of cultural and sports facilities, and the village activity rooms in the village committee have poor facilities and low utilization rates. There is a great demand for cultural and entertainment venues among villagers.

There are no elderly care facilities in the village, and villagers rely more on the street welfare home for elderly care. However, due to various practical situations, there are not many elderly people in the village who go to the welfare home, and there are still many households with poor living conditions who are covered by the five guarantees.

2.Municipal facilities

Drainage facilities: The village does not have sewage treatment facilities and relies on open ditches for drainage. The drainage ditches are not systematic, and some areas have no drainage ditches. The siltation of drainage ditches is prominent, and the drainage problem is significant.

3. Villagers' willingness

Through on-site interviews with offline village representatives and in home interviews, it can be seen that villagers believe that the village should improve public activity venues, and generally believe that the most urgent issue facing the current village environment is drainage.



planning priorities

The core idea of this planning is to adopt a consultative village planning model guided by public policies, shifting from a top-down material spatial planning model to a fundamental rural governance model that prioritizes farmers. The formation of the "Six Governance Principles and Three Innovations" in planning includes six governance principles: rural governance, rural smooth governance, rural gradual governance, rural rule of law, rural autonomy, and rural ritual governance. The three innovations include innovative nature planning content, which forms a new planning content system of "vision+action+agenda" for the key problems faced by villages. Innovation in planning methods, phased determination of the role positioning of different participating entities, ensuring that planning becomes a voluntary choice under diverse negotiation. Innovate the planning path and develop a progressive planning roadmap with clear responsibilities based on the current situation and market trends. Multi dimensional promotion of beautiful rural construction.

The Six Principles of Governance

Township governance Respect nature and local culture	Rural Shunzhi Organic renewal and transformation, policy coherence and consistency	Rural gradual governance Gradual, progressive, and long-term mechanism	Rural Rule of Law Rural planning, construction, and management have been incorporated into the legal framework.	Rural autonomy Self management and self operation	Rural ritual governance Reconstructing rural social order
--	--	--	---	---	---

Three major innovations



Innovation in Planning Methods: Determine the role positioning of different participating parties in stages to ensure that planning becomes a voluntary choice under diverse negotiation.

Three types of entities		Planner	government	resident	WeChat group+crowdsourcing platform Expert, planner, government official, andvillage joint workshop
Rural autonomy Rural Shunzhi	Bashan Vision	Resident participation	coordinate	Expression of Interest	
	Bashan Action	Lead, coordinate, and communicate	guidance	participate in	
	Bashan Agenda	Participate in design	Fund integration	Demand driven	
		Participate in the formulation	Guidance and review	Referendum	

Innovative planning path: Develop a progressive planning roadmap with clear responsibilities based on the current situation and market trends.

Responsibility allocation	phases		Achievement of objectives
	Rural gradual governance Villager self-organization government investment Market investment	Phase 1: Led by the construction of autonomous community organizations, complete the improvement of cleanliness, hygiene, and neighborhood environment.	Phase 2: complete the improvement of village appearance and infrastructure with the goal of local village environment construction.

Basha Plan

Interpretation of relevant plans and case studies for reference

1.Planning Interpretation

《Overall Planning of Lijiaji Street (From 2011 to 2020) 》 The plan specifies that the riverside Wangwan will be the central village bay, the mountain side Wangwan and Chuanziwan will be the grassroots village bays, and the Hetou Licun Bay will be used as reclaimed land in the long term.

In terms of public facilities, one village committee, one kindergarten, one village activity room, and one village level health room are set up in the central village bay. In terms of road traffic organization, Qipao Line is a first-class highway.

level	name	type	Planned population (people)
Central Village	Riverside Wangwan	Control type	647
Grassroots villages	Shanbian Wangwan	Control type	205
	Chuanzi Bay	Control type	116
total			968



Master Plan of Lijiaji Street

2. Case reference

2.1 Industrial Transformation in Shidu Town, Beijing

Shidu Town serves as the southwestern gateway to the capital of Beijing, being approximately 73 kilometers away from the Fangshan District government and 96 kilometers from the functional core area of the capital. The Plan is grounded in relevant policies, laws, and technical standards, fulfilling the control requirements and development guidance stipulated in higher-level plans. It clarifies the development positioning of Shidu Town as a scenic tourism town featuring mountain and water landscapes with northern karst landform characteristics, with ecological conservation, industrial

transformation, and improvement of people's livelihood as the key focuses, and formulates the content of territorial space planning for Shidu Town.

The natural scenery in Shidu is distinctive. It is not only an ideal destination for sightseeing and leisure but also a scientific research and educational base for disciplines such as geology, geomorphology, and environmental ecology. The mountain range here represents the highest, steepest, and most typical karst geological landscape of peak forests and gorges in the northern section of the Taihang Mountains. Currently, the scenic area is the largest scenic and historic site in Beijing and the largest karst peak forest and gorge scenic area in North China. In 2000, the Shidu Scenic and Historic Area was officially recognized as one of the first municipal scenic and historic sites by the municipal government. In 2004, it was identified as the Beijing Shidu National Geological Park by the Ministry of Land and Resources of the People's Republic of China. In 2005, it was approved as an "AAAA"-level scenic area by the State Tourism Administration. In 2008, it was honored with the title of "National Sanitation Town". In 2011, it was named a "National Special Tourism Town". In 2019, it passed the re-evaluation and approval of the Beijing AAAA-level scenic area evaluation group. In 2021, it was awarded the title of "Civilized Scenic Area in Beijing". In 2022, it was designated as a National Rural Tourism Demonstration Town.

Shidu Town adheres to tourism as the leading industry, unwaveringly follows the path of tourism-driven town development and prosperity, and endeavors to establish a comprehensive tourism industry chain with strong integrated service functions, encompassing catering, accommodation, shopping, entertainment, performance, sports, business, healthcare, and study tours. It has gradually transformed from single sightseeing tourism to leisure and vacation tourism, and continuously upgraded its industrial development, striving towards high-quality development.



2.2 Environmental remediation: Zhu Village, Yangshan Town, Wuxi

Yangshan Village Zhu Village is a "sweet village" with the cultivation of peaches as its main industry, and it is also a village with culture, tourism, food, entertainment and other functions in one. When peach blossoms are in full bloom, it is an excellent place to watch. In recent years, through the construction of beautiful villages, Zhu Village has turned the village into a scenic spot, and the village appearance has been significantly improved, and it has successively won the titles of Jiangsu Province Characteristic Rural Village, Jiangsu Province Forest Ecological Village, Jiangsu Province water beautiful Village and so on.

Yangshan Village Zhu Village is located in the core area of Yangshan tourist resort, the village is divided into three groups of villagers, namely Qianzhu village, Zhongzhu village and Hou Zhu village, a total of 105 households, more than 300 people, including 23 party members. Relying on the unique natural ecological environment, coupled with the provincial characteristics of rural construction, effectively the natural environment and village culture organic integration, is a veritable and beautiful village.

In 2017, Zhu Village began to pilot the villagers' self-governance system, and under the leadership of party members representatives and members of the

Zhu Village Council, consultations were held in the Zhu Village Chamber to finally confirm the green transformation plan. In recent years, Zhu Cun has promoted water, electricity, gas and sewage pipe networks into the ground, solved the problem of messy power poles, improved power communication facilities, and realized road hardening and street lamp equipment. Actively build the river dredging, ecological revetment, planting aquatic plants, keep the water clean, so that Zhucun River becomes the "most beautiful river".



2.3 Public participation: Liaocai Village, Baiyun District, Guangzhou

Liao CAI Village is located in the north of Baiyun District, the northwest of Zhongluotan Town, adjacent to Huadu's Beixing, Conghua's Taiping, Liuxi River around the village, the riverbank line is 4,000 meters, known as the most

beautiful riverbank line in Guangzhou. It is about 30 kilometers away from Guangzhou urban area and 3 kilometers away from Guangzhou Baiyun Airport. The total area of the village is 5.42 square kilometers. It is composed of five natural villages and 18 economic cooperatives with a population of more than 6,000 people. In the village, flowers, fruits and vegetables are mainly planted, melons and fruits are ripe all the year round, and large pastoral scenery can be seen everywhere, and it has the reputation of "the most beautiful leisure village in China" and China's rural tourism model village ".

Under the guidance of the government, Liaocai Village established Xanadu Resort Co., LTD., which raised funds by the villagers' voluntary fund-raising and attracted 90% of the villagers to subscribe the shares; Integrate the scattered farmland of a family with land shares, transfer more than 1,000 mu of land by the Liuxi River back to the collective, unify the planting of flowers, fruits and organic vegetables, integrate various professional cooperatives and large family farms, and integrate agricultural production, processing and circulation of agricultural products with leisure and sightseeing experience.

Three rounds	Pre planning stage	Mid term planning	Planning for the later stage
Four contents	First solicitation of public opinion	Recruit public opinion again	Voting plan
Five ways:	Questionnaire interview	Planning Workshop	Planning bulletin boards and village representative assemblies



3.brief summary

By drawing on similar cases, it can be concluded that the planning and construction of "Bashashan" should pay more attention to the three aspects of "industrial transformation, environmental improvement, and public participation":

1.Industrial transformation: tourism +

Based on traditional tourism resources such as natural and cultural attractions, we create unique product experiences that meet the needs of tourists, strengthen brand effects, and highlight the "core competitiveness" of villages.

2.Environmental remediation: responsibility +

By clarifying the responsibility of villagers in designated areas, encouraging their full participation throughout the process, and implementing economically practical environmental design, we aim to promote environmental autonomy among villagers and achieve sustainable development of the village environment. Enhance the autonomy and initiative of villagers.

3.Public participation: cooperate+

Change work methods, establish a working mechanism for joint planning, build a "public regulation" and all staff participation platform, mobilize local villagers and local management departments to jointly formulate beautiful rural planning, consolidate consensus, ensure the implementation of measures, promote rural construction, and improve villagers' "joint participation".

2.2 Spatial Planning of Rural Areas

1.Development goals

Based on the favorable suburban location and ecological resource endowment of Bashanzhai Village, taking the pilot project of beautiful rural construction in Wuhan as an opportunity, we will transform our planning concepts, work methods, and innovate institutional mechanisms. This plan aims to build Bashanzhai Village into: The benchmark for the endogenous construction and development of beautiful rural areas in Wuhan City; Huangpi District Beautiful Rural Comprehensive Demonstration Site; Yunwu Mountain is an important service base in the tourism circle of Yunwu Mountain.

2.Planning Vision

A more efficient new industrial system - the demonstration village of the three linkage

Better Production and Living Conditions - Ecological Living Style Village; Higher level of democratic management - Village self governance leading village.

Planning strategy

1. Seeking agricultural interests and promoting transformation

injecting vitality into agriculture through the integration of agricultural production and tourism. On the basis of protecting the existing industrial pattern, promote the transformation from a single traditional agricultural development model to a modern diversified development model. Using leisure experiences as a carrier and agricultural activities as a foundation, we aim to revitalize rural resources and optimize industrial models. Create a differentiated and complementary development model with one bay and one industry.

2. Shaping the charm of the countryside, reminiscing about nostalgia

weaving and repairing the rural environment, space, and continuing the style, making the countryside more like a countryside. On the basis of continuing the original village spatial texture through spatial patching, environmental improvement and public space construction are carried out to meet the basic living needs of residents; By highlighting the local style, we aim to strengthen the protection of rural flavor, inherit the unique stone architecture cultural heritage of Bashan Village, and carry out renovation in accordance with the principle of restoring the old to its original state, providing the public with an ultimate comparative experience of nostalgia and rural living. Realize the continuation of rural texture and protect the local charm.

3. Establishing order, participating together

with rural order, jointly participating and rebuilding order, allowing villagers to jointly build. By promoting awareness throughout the village, guiding a change in rural governance attitudes, reconstructing a new rural order,

establishing contracts and agreements, inspiring farmers to become the main implementers of beautiful rural construction, and building a democratic and autonomous new countryside that is jointly constructed and enjoyed.

2.3 Development Model and Industrial Structure

1. Analysis of Development Potential

The State Council Information Office of the People's Republic of China has issued the "Several Opinions of the State Council General Office on Further Promoting Tourism Investment and Consumption", which states that units with conditions can optimize the 2.5-day summer schedule and implement rural tourism upgrading plans to explore tourism consumption space. Based on the local resource characteristics and ecological environment advantages, highlight the ecological characteristics of rural life and production, deeply explore the cultural connotations of rural areas, and develop and construct diverse, distinctive, and personalized rural tourism products. Small and medium-sized intensive farming is the main production mode of agriculture in China, and it is also the foundation for ensuring national food security. General Secretary Xi Jinping emphasized that "Chinese people's rice bowls should always be firmly in their own hands, and our rice bowls should mainly be filled with Chinese food." Bashan Village has outstanding natural resource characteristics and environmental advantages, and how to utilize existing resources to achieve a "5+2" lifestyle of urban-rural sharing.

2. development model

Plan to form a "tourism+" development model, fully leverage the driving force, integration ability, catalysis, and integration role of the tourism industry, provide a tourism platform for the development of related industries and fields, insert the wings of "tourism", form new formats, and provide their development level and comprehensive value. In this process, "tourism+" also effectively expands the development space of tourism itself and promotes the

transformation and upgrading of tourism. Build an important carrier for the upgrading of innovative industries and the "5+2" lifestyle of residents in the region, and establish a multi-dimensional planning and development system for "tourism+" agriculture - a new form of modern agriculture, "tourism+" ecology - a new manifestation of ecological value, and "tourism+" lifestyle - a new interpretation of rural life.



3.industrial system

Build an industrial system with rural tourism as the characteristic industry and high-yield agriculture and characteristic agriculture as the basic industries. Among them, the characteristic industries are mainly driven by rural tourism to develop characteristic industries such as agricultural experience, agricultural sightseeing, vacation and leisure; The basic industries are mainly high-yield agriculture and characteristic agriculture, with planting of grain and oil, tea, fruit trees, seedlings, breeding and other characteristic agriculture.



Grain and oil, tea, fruit trees, seedlings, aquaculture

4. Development path

The plan adopts a gradual development path led by "tourism+", with environmental remediation as the catalyst and core tourism projects as the catalyst, to comprehensively drive the development of rural areas, agriculture, and farmers, and ultimately achieve a development path of 1.0, 2.0 to 3.0.

4.1 1.0 Mode——Village Bay Environmental Remediation

Taking Shanbian Wang as the initial starting point, we will carry out economic and practical village environment design to create a catalytic effect. By delineating clear management boundaries for full responsibility, we promote villagers' environmental autonomy, achieve sustainable development of the village environment, and enhance villagers' autonomy.

The planning concept is based on the organic renewal of traditional villages, promoting the stock management of rural style and humanistic

ecology. The plan replaces large-scale demolition and reconstruction with small-scale renewal of "homesteads" as the basic unit, ultimately implementing the planning object at the level of "homesteads" to better maintain the texture of the village and protect the interests of villagers. Mainly focusing on the following four points to promote the improvement of village bend environment:

Firstly, through the continuation of texture, the spatial texture of each village bay is continued, and the architectural spatial texture, open space texture, and road traffic texture are sorted out to extract the characteristics of the village; The second is to integrate the space through spatial optimization while maintaining the original spatial texture, and to open and improve the activity space with rules while maintaining the traditional pattern of the local area. This mainly focuses on environmental improvement, public service facility configuration, and infrastructure construction; The third is to integrate the spatial planning and functional linkage through the implantation of business formats, and use the development of tourism service industry as the engine to enhance the overall development momentum of villages; The fourth is to use ecological patching, integrate natural resources, highlight regional elements, extract natural elements such as mountains, water, fields, gardens, and forests in the village bay, and reshape a more interesting, touristic, and unique beautiful and livable rural landscape.

4.1.1 Current situation analysis

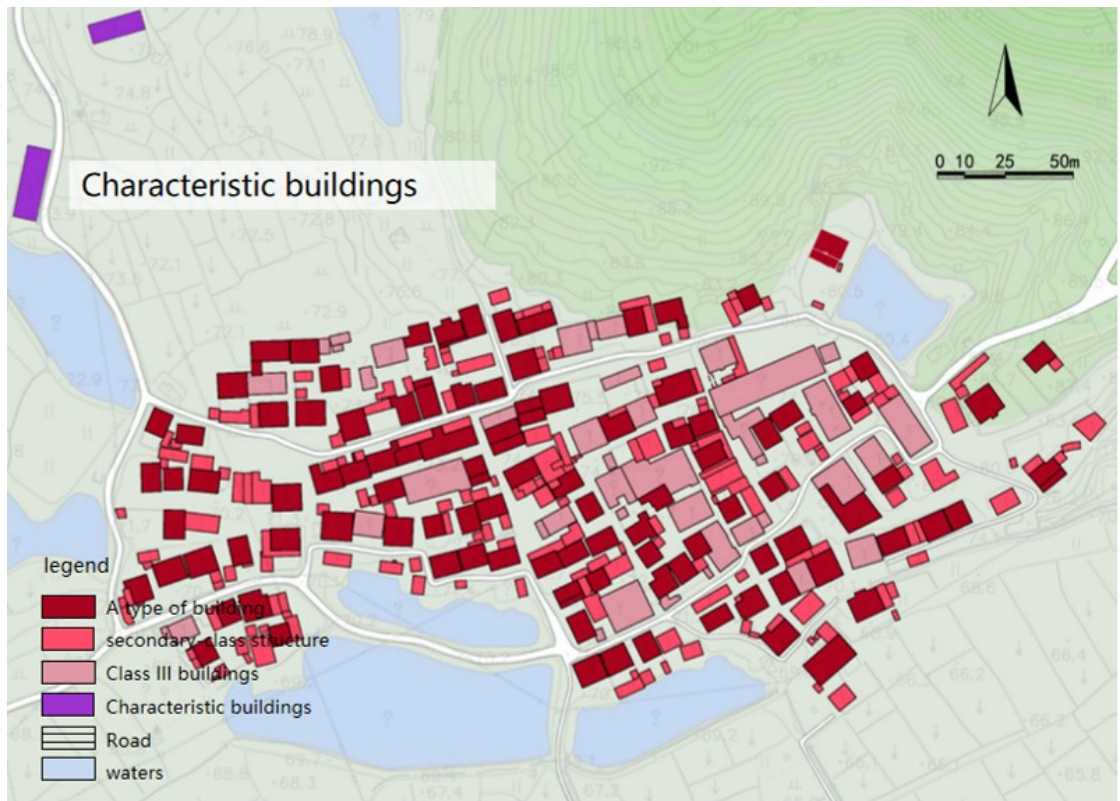
Regions with concentrated distribution of tourism resource: To the north is Chashan, to the east is Bashan Reservoir, and to the south is a vast expanse of fertile farmland surrounded by dense ponds, most of which have good water quality and a good natural ecological foundation.

The internal spatial layout of the village bay is compact, with a clear pattern of circular roads and alleyways, but there is a lack of public space.



4.1.2 Building quality

The current number of households is about 118, and the overall architecture is relatively good, including characteristic buildings such as brigade communes; But there is a problem of mixing old and new buildings.



4.1.3 plan positioning

The planning is positioned as a tourism service, with a focus on creating rural tourism, characteristic farmhouse stays, rural homestays, and folk experiences as the core of comprehensive tourism services.



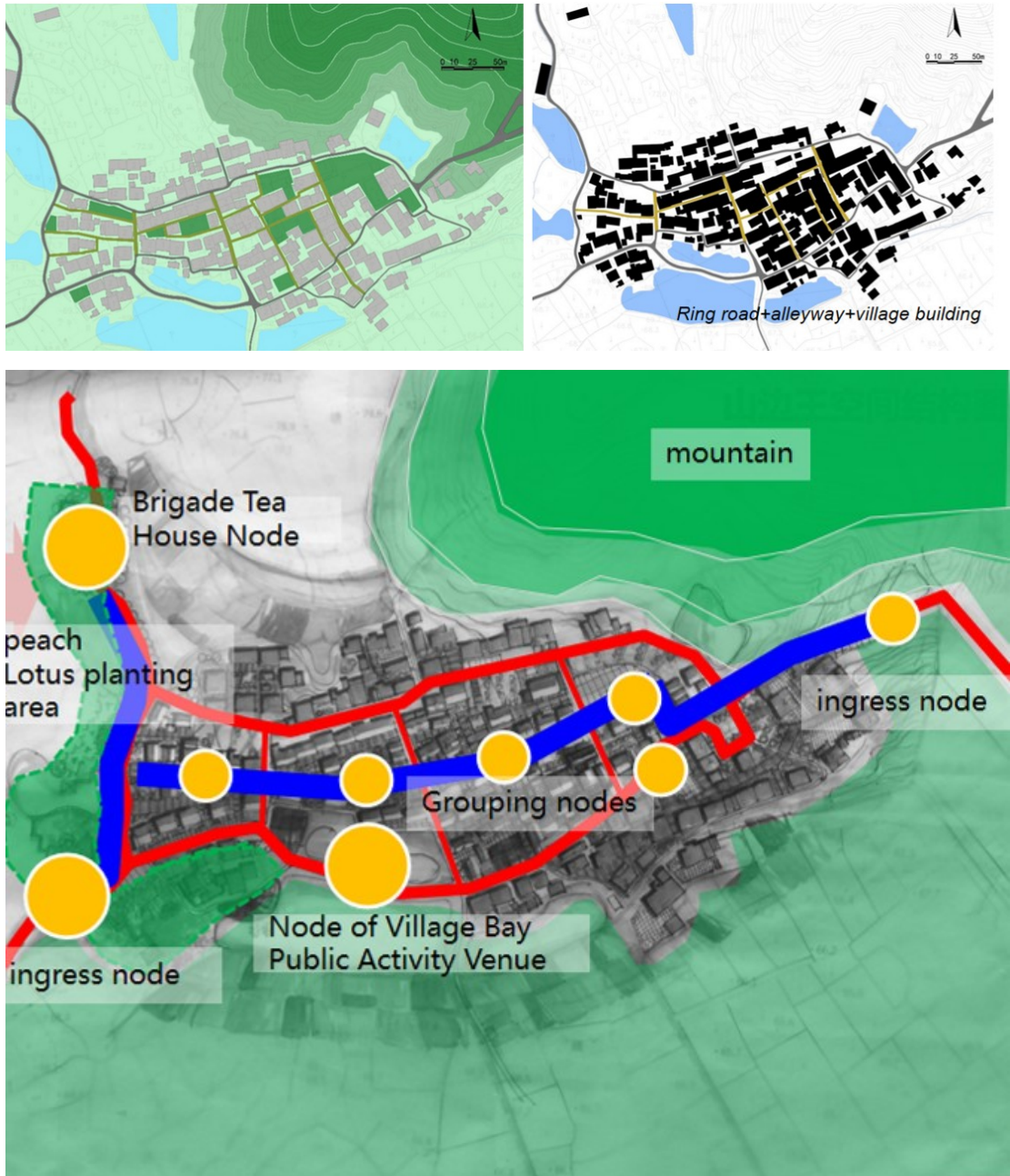
Planning renderings

4.1.4 Planning Concept

Using mountains as a screen and stacking layers upon layers. The plan aims to strengthen the spatial form and landscape features by vertically organizing the layout along the mountain and reducing the hierarchy of building contours.

Lane sorting and texture continuation. Maintain the original texture and style, carry out partial demolition in combination with the quality of the building, clear the horizontal roadway space, highlight core resources, combine points and lines, and create a village bay public activity center and cluster center.

The main renovation focus of Shanbian Wang is Highlight core resources and combine points, lines, and surfaces.



4.1.5 General layout

Based on the existing site of the brigade commune and peach tree planting foundation at the west entrance, the surrounding environment of the entrance will be renovated and functions will be injected to create an entrance service node;

At the same time, combined with spatial renovation, a village bay activity center level cluster center will be formed to improve the service functions of

rural tourism, homestays, etc., and promote the integration and improvement of the four central cluster areas.



- ① Commune Tea House ② Lotus pond ③ Clan Culture Pavilion ④ Public Activity Square
- ⑤ Group small amusement park ⑥ Lane lighting ⑦ Yishan Square ⑧ agritainment
- ⑨ Half Mountain Homestay

4.1.6 Important Node Planning

West entrance node The entrance located at the western end of the village is one of the important historical and cultural carriers of Bashan Village, and also one of the important gateway landscapes.

Brigade Tea House: Based on the current architecture, the main approach is to transform the internal spatial layout, organize the local landscape around the building, and inject local tea culture elements, allowing tourists to experience the charm, nostalgia, and local feelings everywhere.

Peach Blossom Garden: Based on the existing peach tree planting and supplemented by other local plants, create a landscape park public space at the entrance.



Add color group: Located along the main entrance road of the village, utilizing the characteristic dry masonry buildings on both sides to inject tourism service functions: Provide diverse rural experiences such as homestays, rural cuisine, and rural customs, offering the public an ultimate comparison experience between homesickness and rural living.



West entrance node: The entrance located at the western end of the village is an important gateway for Bashan Village to actively connect with Yunwu Mountain Scenic Area. It is planned to inject service functions and focus on building:

① Entrance dry masonry wall: Connect with the eastern Yunwu Mountain scenic area, plan to utilize the local stone masonry characteristics of Bashan Village, and create a dry masonry stone wall node at the northeast entrance.

② Entrance Hill Landscape Forest: Based on the existing local forest planting and the mountainous terrain characteristics, create a mountain landscape viewing forest at the entrance.

③ agritainment : Utilize the existing characteristic houses on the mountainside, plan rural tourism and other functions, and strengthen the tourism service function of Shanbian Wang.

④ Mid mountain dwellings: Plan a half mountain homestay by utilizing the existing characteristic houses on the mountainside.



Northeast Entrance

4.2 2.0 Mode——Driven by tourism polarization Focus on promoting high-quality tourism and leisure projects. Fully connect with the Yunwu Mountain Scenic Area, focus on creating diverse tourism and leisure projects such as waterfront leisure, wilderness camping, outdoor sports, tea garden sightseeing, and cultural experience, and comprehensively build a comprehensive tourism node dominated by landscape experience.

Relying on high-quality resources such as Bashan Reservoir and Qianmu Tea Mountain, we will fully connect with the Yunwu Mountain Scenic Area, focusing on creating diverse tourism and leisure projects such as waterfront leisure, wilderness camping, outdoor sports, tea garden sightseeing, and cultural experience, and comprehensively build a comprehensive tourism festival dominated by landscape experience.

The key projects planned and constructed mainly include Tianxiang Tea Garden sightseeing (picking), cycling tea ceremony, Bashan Waterfront Fishing Park, rural barbecue park, and tent campsite.



4.3 3.0 Mode——interactive development

By fully promoting the development of rural areas, agriculture, and farmers through the tourism industry, improving the tourism service facilities of village bays, realizing the transformation of village bay functions from traditional residential to comprehensive tourism service functions, and realizing the transformation of agricultural scale planting to sightseeing and experiential agriculture.

Comprehensive linkage to achieve the comprehensive transformation of rural industries By fully driving the development of rural areas, agriculture, and farmers with the tourism industry, improving the tourism service facilities of village bays, realizing the transformation of village bay functions from traditional residential to comprehensive tourism service functions, realizing the transformation of agricultural scale planting to sightseeing and experiential agriculture, and comprehensively constructing three major tourism and leisure themes and tourism and leisure projects.

①Agricultural industry specializatio

Based on the existing agricultural foundation, we will strengthen the innovation of agricultural production models, actively promote the modernization of agriculture, focus on creating high-yield farmland areas and characteristic agricultural areas, and strengthen and implement characteristic agricultural brands while fully ensuring the development of basic agriculture.

②Other Village Bay Themes

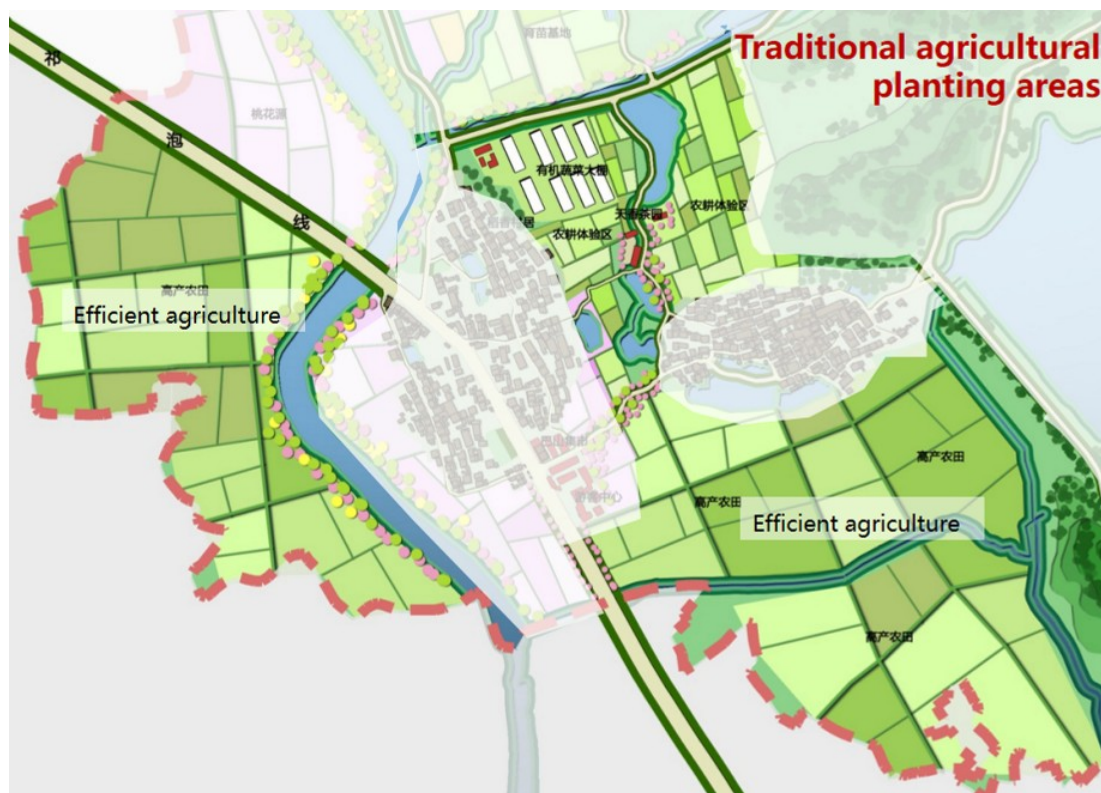
By using the tourism industry to support rural development and strengthen the service functions of villages, we aim to promote the overall functional transformation and style transformation of rural areas through functions such as homestays, agricultural experiences, and rural sightseeing, and effectively achieve the construction of rural pastoral complexes.



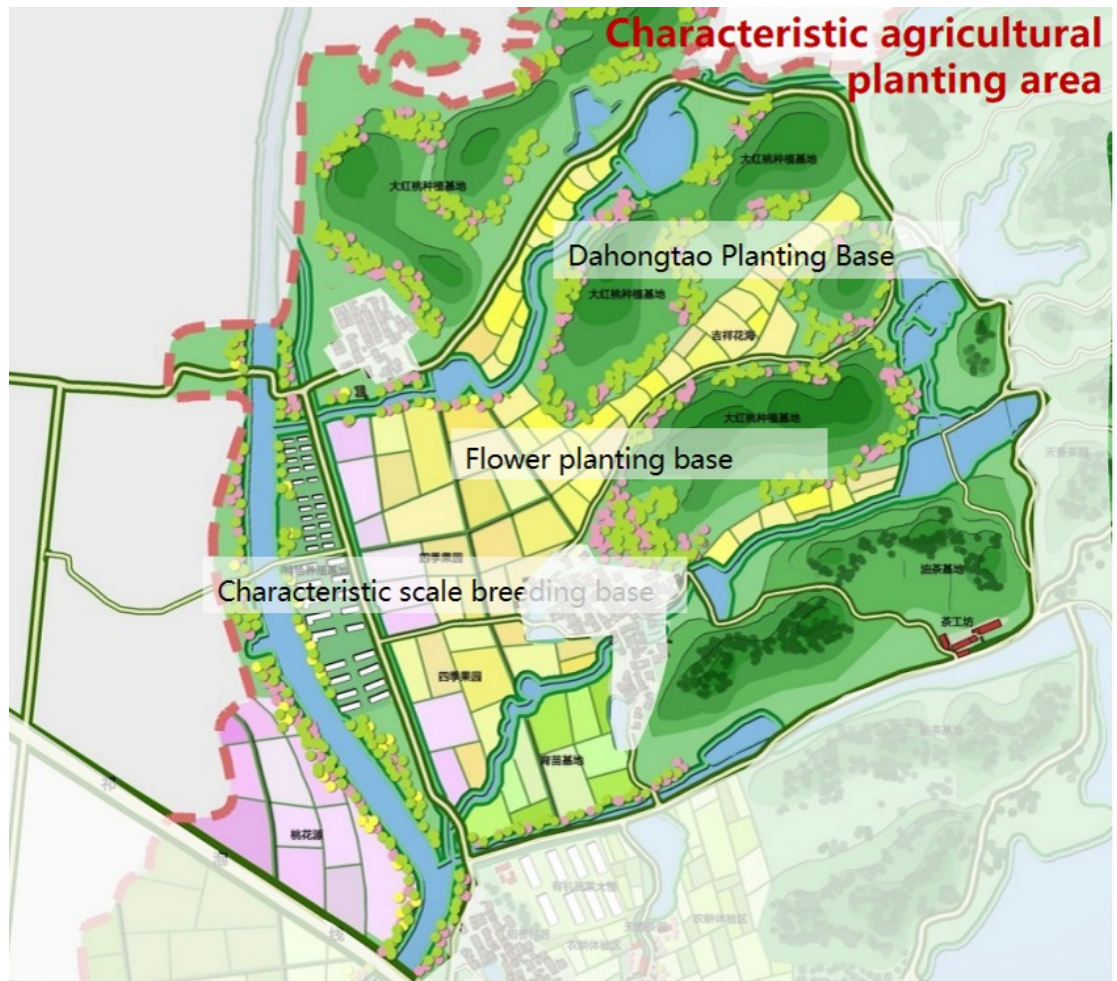
①Agricultural industry specialization : Consolidate the foundation, highlight the characteristics and scale of agriculture

Based on the existing agricultural foundation, actively promote land transfer around the villages of Shanbianwang and Hebianwang, adopt the

model of large-scale agriculture and family farms, and focus on crops such as rice, rapeseed, and organic vegetables to create three high-efficiency agricultural demonstration bases.



In the northern part of the village, around Hetou Li and Chuanzi Bay, combined with the terrain conditions and agricultural foundation, we will focus on creating high value-added characteristic demonstration agriculture dominated by characteristic breeding, characteristic flowers, fruit and vegetable planting, tea planting, and economic forests. We will actively promote the operation of farmers' cooperatives and companies, strengthen the promotion of brands such as Bashan Da Hong Tao and Mulan tea, and actively build a path of agricultural characteristic development.



② Other Village Bay Themes——River King

Current situation analysis: The surrounding water resources of the village bay are abundant, and the internal channels are interdependent. However, the overall spatial layout of the village bay is loose, the environment is messy, the hollow phenomenon is obvious, and the public activity space is insufficient.

The current number of households is about 173, with mixed old and new buildings in the village bay. A type of building is mostly brick concrete or steel-concrete structure, with good building quality; Class II buildings are mostly brick and wood structures, with a construction time of over 10 years and average building quality. The three types of buildings are mostly civil and stone wood structures, with traditional styles still present, but the building quality is poor and there are safety hazards. The first type of buildings along

the riverbank are mostly distributed along the road, the second type of buildings are scattered, and the third type of buildings are mostly distributed in areas with inconvenient transportation inside the village bay, forming a phenomenon of empty village space.

**Class I
buildings**

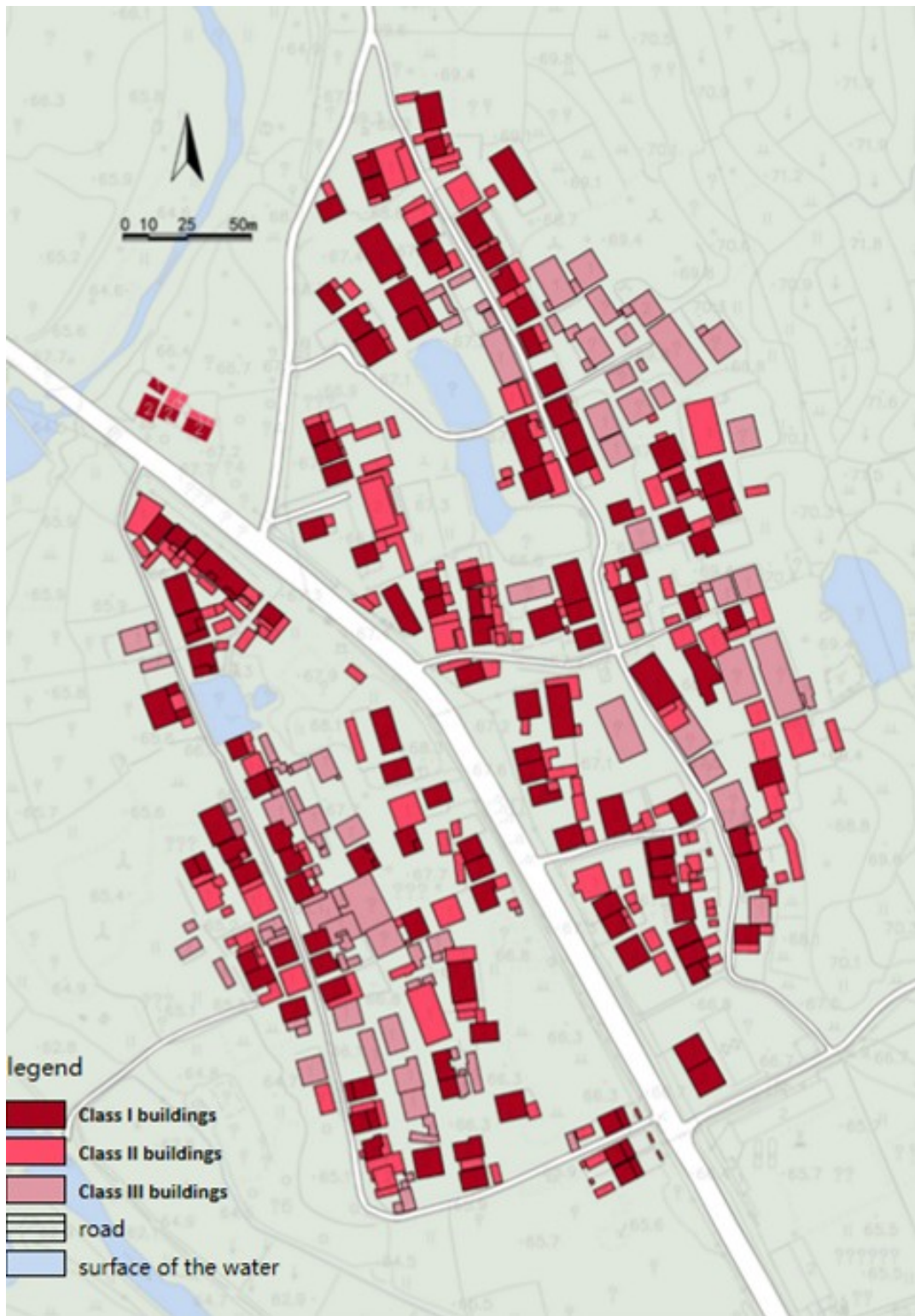


**Class II
buildings**



**Class III
buildings**

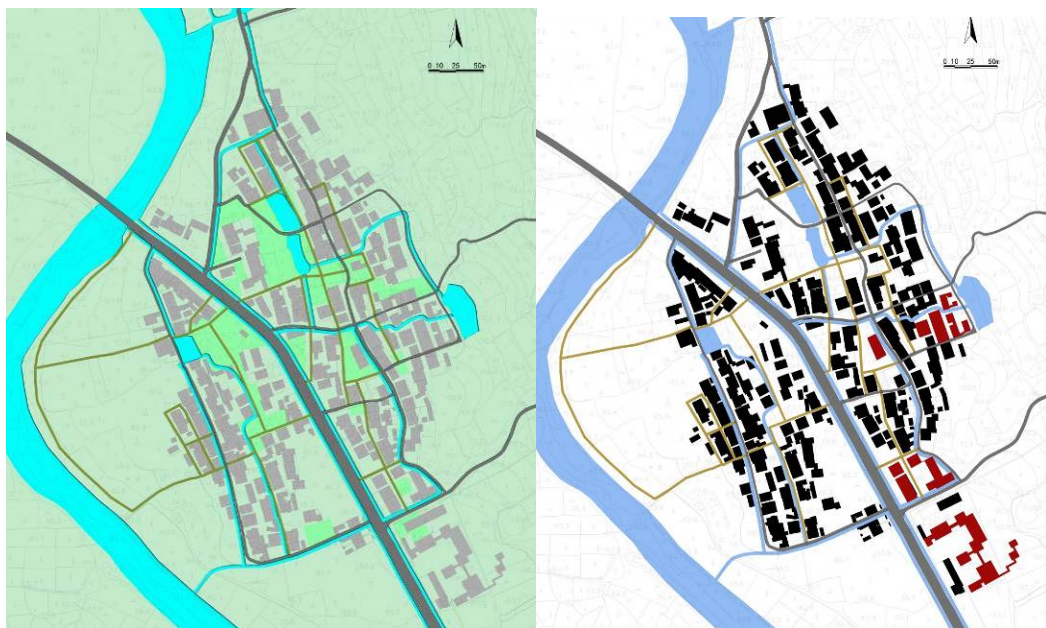


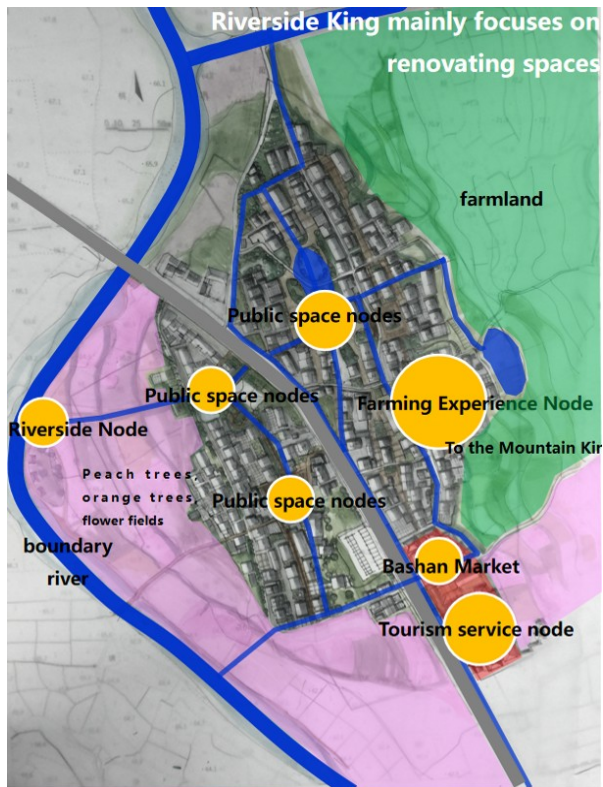


Architectural evaluation diagram

Planning Concept Create a fruit tree planting area in the western part of the village bay and a farmland planting area in the eastern part, with the fields as the bottom, to promote the integration and symbiosis of farmland and villages in the landscape.

Clearing the alleyways and guiding the village space from disorder to order; Create nodes within the village bay, create public activity venues for villagers, and create tourist activity venues at the junction of mountains and rivers between the Shanbian Wang and the Riverside Wang.





The planning is positioned as a rural interest in the fields and a king of farming by the river. Through the integration of farming experience, agricultural culture display, popular science education, and tourism transfer services, we aim to create a rural bay with a focus on farming. Make it a village bay with distinctive features, prominent themes, and rich agricultural history

and

cultural



heritage.

Tourism Transfer Service Center Node: At the southern entrance of the village bay, at the intersection of mountains and waters, a village tourism transfer service center is built, providing convenient functions for tourists to query, book, and receive tourism services. Through this platform, tourists can easily access various travel information, develop personalized travel plans, book travel services, enjoy high-quality tour guide services, and communicate and interact with other travelers. Establish a tourist service center, Bashan

market, courtyard hostel, and Taolin Xiangjing. Among them, the tourist service center utilizes local architectural styles to construct a service center that integrates functions such as tourism consultation, transit, and emergency assistance; The courtyard hostel is adjacent to the tourist center, and the residential area will be renovated and expanded in conjunction with the peach blossom forest. The Taoyuan hostel will also provide a resting place for tourists; Bashan Market is built on the site of the original supply and marketing cooperative to serve villagers and tourists, creating a unique and artistic market that serves as a space for artists to design and exchange ideas; Taolin Xiangjing plants peach trees on both sides of the road connecting Shanbian Wang and Hebian Wang, creating a peach blossom landscape road and enriching the texture of

Tourism Transfer Center



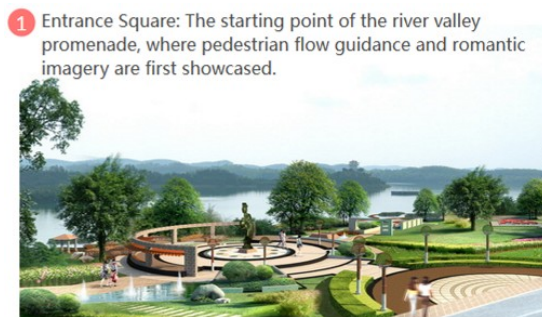
farmland.

Farming Experience Zone: Based on the agricultural planting in the eastern part of the village bay, the abandoned and dilapidated houses around the farmland will be renovated and renovated to create farming memory centers, farmyard courtyards, and agricultural gardens. Among them, the Agricultural Memory Museum is used to showcase agricultural civilization, trace the development process of agricultural history and culture, leave historical and cultural products, and be used for publicity and popular science education; The farmhouse courtyard is renovated using the characteristic stone masonry architectural style of Bashan Village, forming a unique and distinctive agricultural self-service farmhouse courtyard; The agricultural park utilizes the farmland in the eastern part of the village bay to build interactive areas for agricultural picking, farming activities, and agricultural science popularization.



Romantic River Valley: Based on the boundary river and peach forests on both sides, a northwest entrance square and a waterfront landscape trail are

set up to create a year-round floral landscape, forming an entrance square, river valley walking path, riverside wooden houses, and a year-round flower sea. Among them, the entrance square starts with a river valley promenade, guiding pedestrian flow and showcasing a romantic image; The river valley promenade connects different tourist activity areas along the riverbank with a riverside landscape trail; The riverside wooden house features a unique experiential wooden house, creating a romantic cabin in the riverside flower room; The Four Seasons Flower Sea uses water as a medium and flowers as veins, utilizing the micro terrain of river valleys to create a flower sea landscape with overlapping water splashes.



Chuanziwan is planned as an experiential village, positioned as Langli in Taoyuan and a picturesque Chuanziwan. With the support of peach forests, it aims to create a peach culture themed farmhouse tourism, with the characteristic agriculture of revitalizing the village, enriching the people with peaches, and making a name for themselves with peaches. Through a combination of online and offline methods, it aims to create a rural tourism service functional village bay that integrates "flower appreciation+fruit picking+farming+cultural and tourism creativity".



Takahashi LiThe planning is positioned as a tea scented garden and a cultural hub, promoting tourism through tea and combining tea and tourism. With tea creativity as the driving force, we will continuously carry out the action of "transforming tea industry into tea economy, tea area into scenic area, and tea mountain into scenic spot", actively carry out new tea tourism projects such as "tea tourism+homestay" and "tea tourism+study", shape the tea tourism brand, enhance the connotation of tea tourism, create tea tourism characteristic attractions, and let tourists experience the fun of tea picking, tea frying, and tea tasting; At the same time, we will build experience centers with tea culture as the theme, such as tea expo parks, tea ceremony museums, tea garden pastoral

songs, tea restaurants, and tea homestays, to create a tea culture exhibition village bay that integrates tea art display, tea tasting, tea picking, and processing experience.



Hetou Li The planning is positioned as a traditional rural residence, secluded by the river, relying on the orderly spatial texture of the village, tranquil village environment, and local atmosphere of the small village, to create a characteristic village with a quiet local atmosphere.

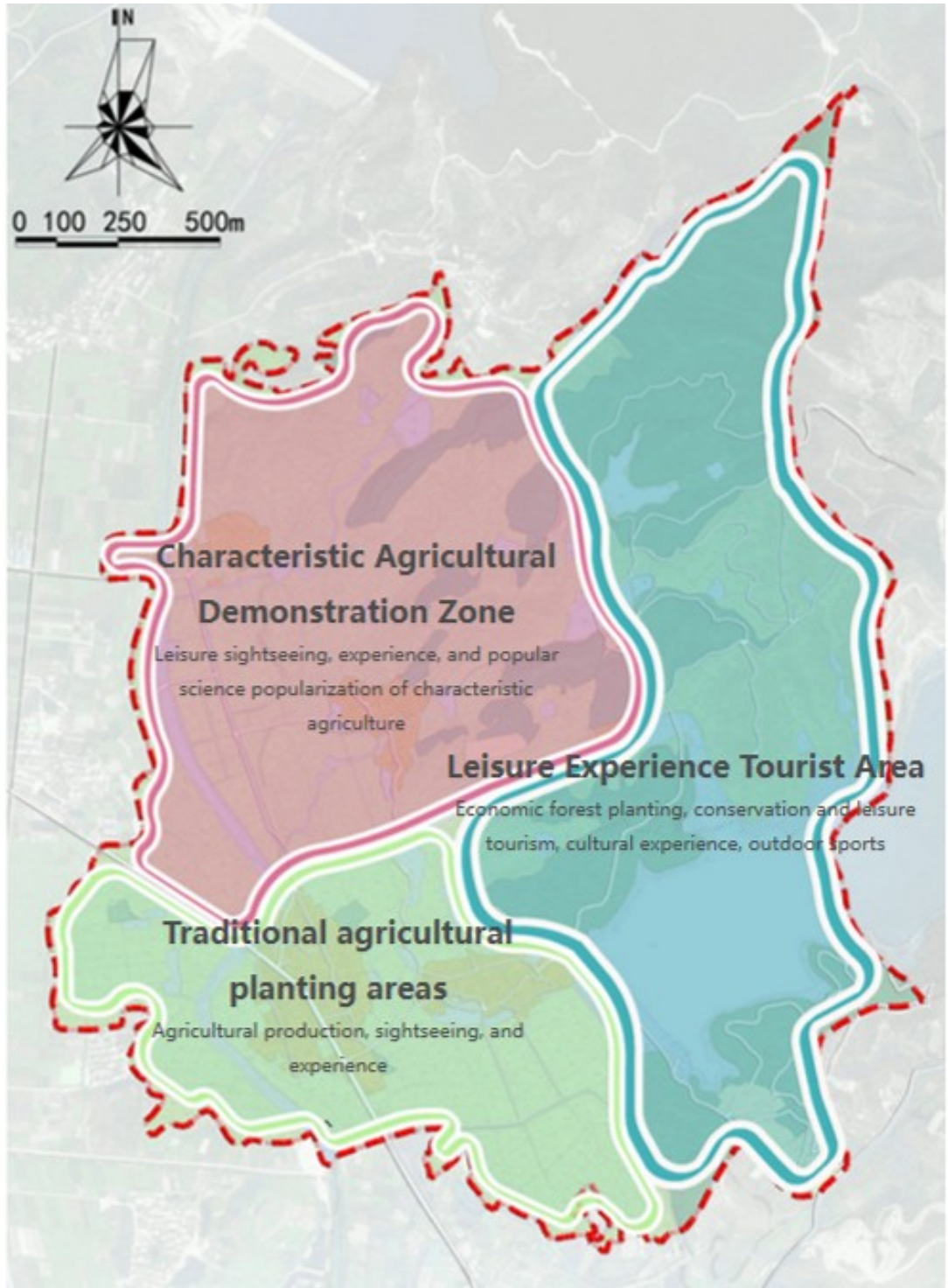


5. Industrial spatial structure

Plan to form three differentiated industrial structure systems, including traditional agricultural planting areas, characteristic agricultural demonstration areas, and leisure experience tourism areas. Among them, traditional

agricultural planting areas are combined with modern grain and oil planting to create a functional area that integrates agricultural production, sightseeing, and experiential functions. The characteristic agricultural demonstration zone relies on peach planting and breeding plants to form a functional area that integrates leisure sightseeing, experience, and agricultural science popularization. The leisure experience tourism area relies on tea planting, Bashan Reservoir, and natural mountains in the northeast to create a functional area that integrates leisure sightseeing, cultural experience, and outdoor sports.

Industrial film	Main Industry Types
Traditional agricultural planting industry	<p>Primary industry: Grain and oil, rice cultivation</p> <p>Third industry: Appreciation of local farmland and bay landscapes and agricultural experience industry.</p>
Featured Agricultural Demonstration Industry	<p>Primary industry: Planting and breeding of forest fruits such as big red peaches</p> <p>The tertiary industry: combining fruit forest economy with tourism, developing tourism, experiential, and characteristic agricultural science popularization industry</p>
Leisure Experience Tourism Demonstration Film	<p>Primary Industry: Tea Planting</p> <p>The tertiary industry: leisure tourism and tea picking experience industry in Bashan Reservoir</p>



Industrial spatial layout map

Village spatial layout

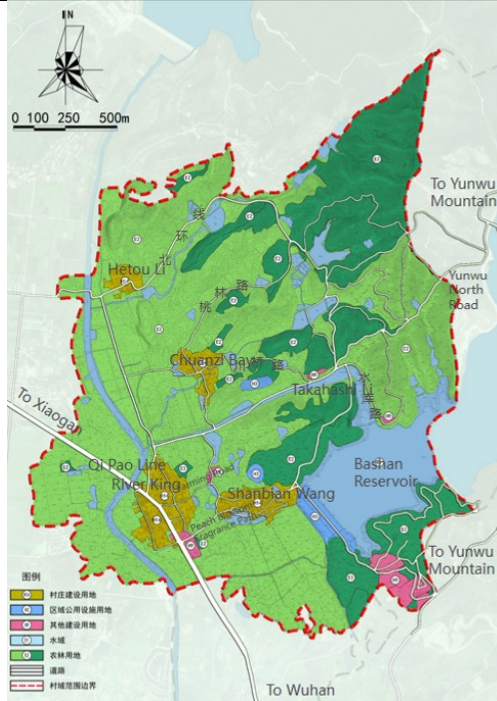
1.Land layout

The overall land layout follows the principle of not increasing construction land or encroaching on agricultural and forestry land, fully respecting land use planning, and conducting investigations based on the relocation intentions of the village, Plan to retain the original 4 residential areas while keeping their construction scale basically unchanged, with a village construction land area of 18.9 hectares; Replace the abandoned Gaoqiao Li Village with tourism service land and increase a small amount of tourism service land according to tourism demand, with a total tourism service land area of 5.5 hectares.

Summary Table of Construction Land

code	Land use classification	Land use scale (hectares)	Proportion (%)
1	Construction land for urban and rural residential areas	18.9	5.1
14	Land for village construction	18.9	5.1
2	Land for regional transportation facilities	3.1	0.8
22	Land for highways	3.1	0.8
9	Other construction land	5.5	1.5
3	Land for regional public facilities	4.5	1.2
1	waters	77.1	20.6
	Agricultural and forestry land	264.3	70.

2			8
total		373.4	10 0.0



Layout Plan of Land Use in Bashanzhai Village

2.road traffic

Build an integrated transportation system that is suitable for production, living, and tourism. The planned village roads are divided into three levels: village main roads, village secondary roads, and village branch roads. The main road of the village is planned to be a ring road with branch structures, connected to the Qipao Line, linking the main residential areas and industrial areas of the village, and connecting to the Yunwu Mountain scenic area road.

The village secondary road has strengthened the connection between residential areas, industrial zones, and external areas.

The village branch roads are mainly roads within the village bay and industrial area.

The three-level road forms a convenient and accessible internal and external transportation connection in Bashan Village.

Road type	Road width	Road surface form
Village main road	6m	Three boards or one board
Village secondary road	4m	A board
Village branch road	2.5-3m	A board



Village Road Traffic Map

3.Municipal Engineering

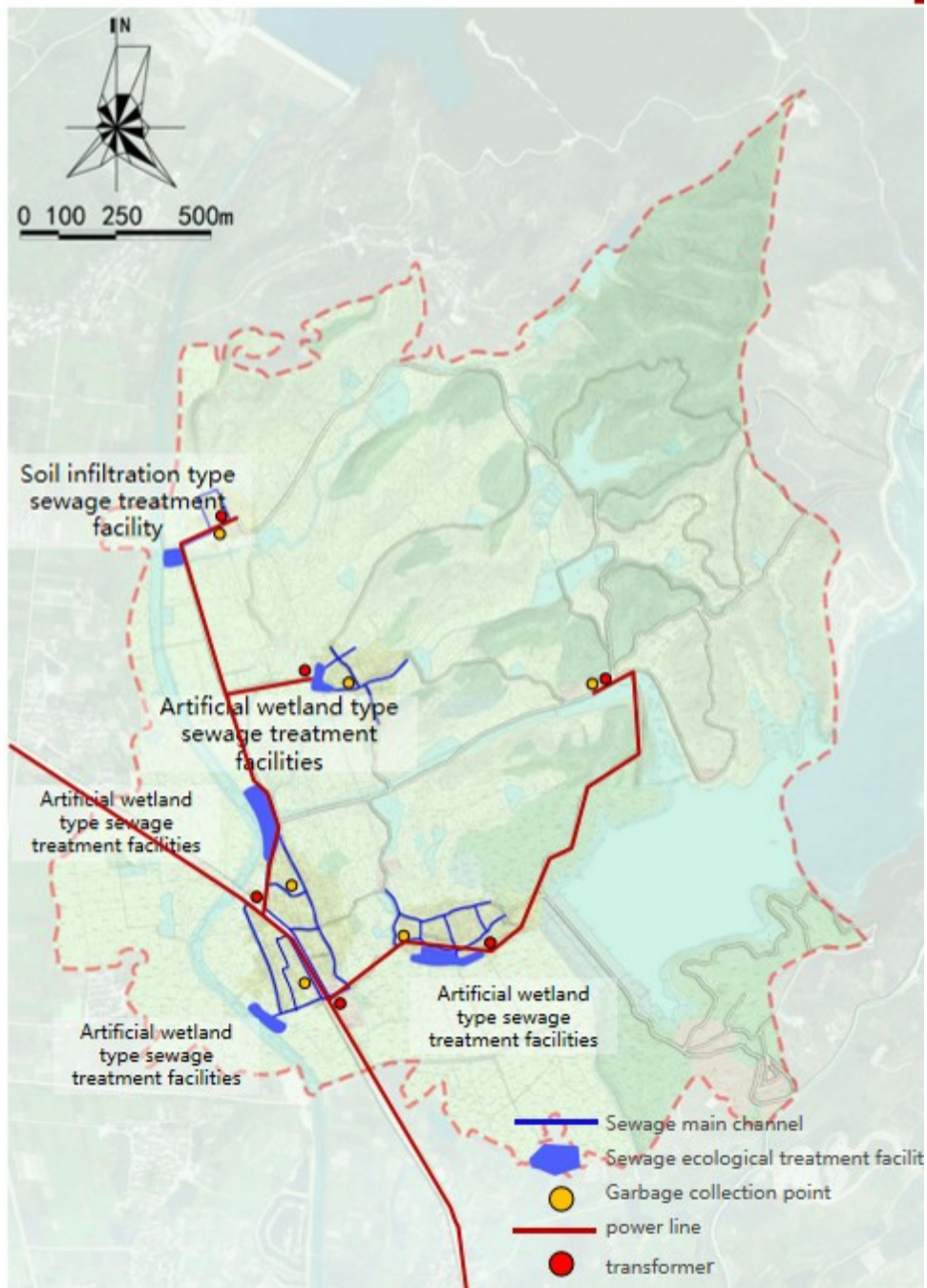
Drainage planning : According to the terrain conditions, village distribution, and sewage characteristics, a decentralized sewage treatment method is adopted, and each village independently sets up sewage pipes and ecological sewage treatment facilities.

Village name	Length of main canal (meters)	Types of sewage treatment facilities	Scale of sewage treatment facilities (square meters)
Shanbian Wang Village	1000	Artificial wetland type	6000
Riverside Village	2200	Artificial wetland type	9000、3000
Chuanziwan Village	600	Artificial wetland type	2500
Hetu Li	400	Soil infiltration type	2500
total	4200	——	23000

Power planning: The Bashanzhai power main line crosses the village area from the southwest corner and passes through the riverside king. Plan the entry of a 110kV power supply line, establish 6 substation facilities, and arrange the main pipelines along one side of the planned road in the village. Replace the

aging wires to meet the electricity demand and improve the safety, economy, and reliability of power supply.

Environmental sanitation planning: According to the actual needs of villagers, the construction of environmental sanitation engineering facilities will be planned and improved. A collection point will be set up for every 40-60 households, covering an area of 4 square meters. A total of 6 centralized garbage collection points will be set up in the plan. Garbage can be disposed of by landfilling, fertilizing, or transporting it to the town's garbage disposal site based on local conditions. To promote the development of circular economy and the comprehensive utilization of waste, it is necessary to prevent secondary pollution.



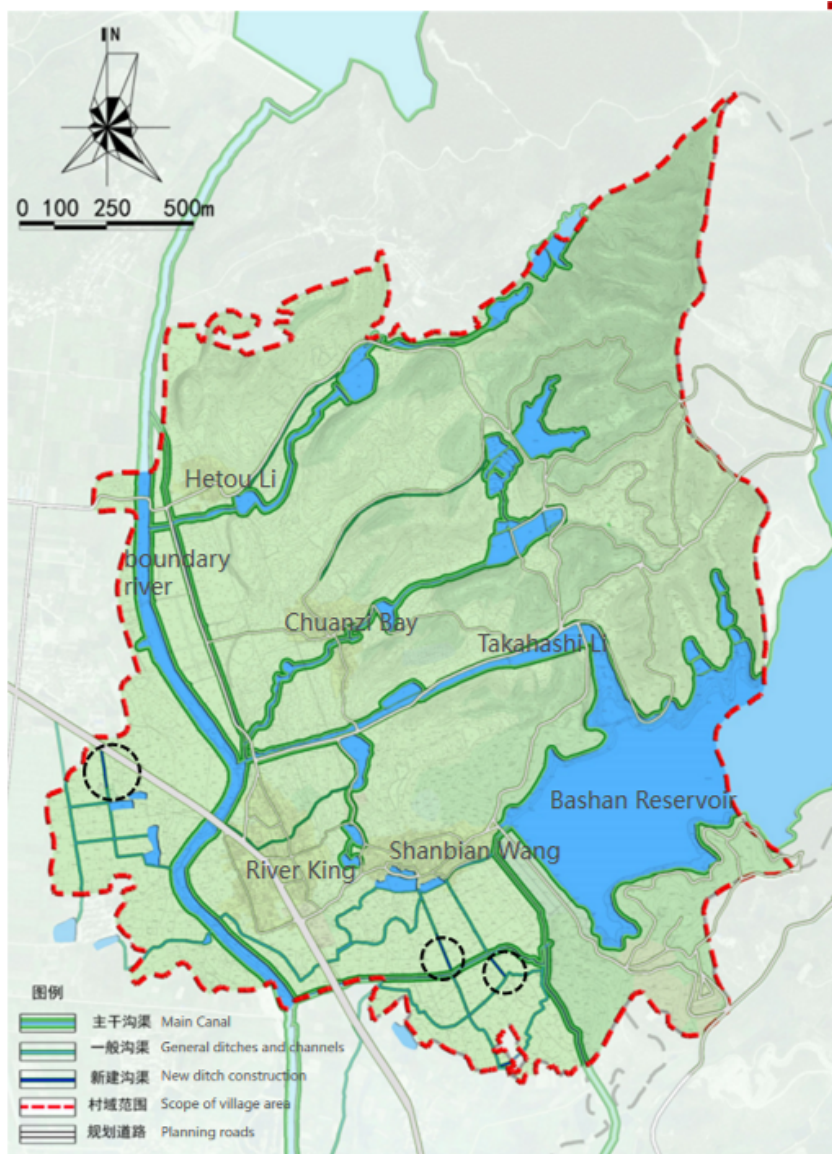
Planning diagram of municipal engineering system

4. Water system planning

Planning principles and objectives Fully improve the utilization rate of water resources in the entire region, comprehensively plan and coordinate arrangements, pay attention to ecological protection and water resource

utilization, and coordinate the development of domestic and production water use.

Water system network planning Based on the current boundary river and Bashan Reservoir, form an east-west main channel; And connect and organize local branch canals.



Water system planning map

5. General layout

Based on the current spatial pattern of the village and the planned industrial spatial structure, two types of service-oriented villages will be formed, including tourism service comprehensive type and industrial

supporting service type. Among them, the comprehensive tourism body is characterized by tourism services, rural charm, mountain edge king, field and rural charm, and agricultural riverside king; The industrial supporting service type includes Taoyuan Langli, Lanhua Chuanziwan, tea scented gardens, artistic Gaoqiao plum, traditional rural residences, and quiet Hetou plum. Through the planning of agricultural and forestry land industry, we aim to restore land production capacity and create two types of village bays. Based on the positioning of each village bay, we will supplement the functions of folk customs, food, homestays, etc., create a sense of rural atmosphere, and further stimulate vitality.



General layout

Chapter 3. Action Plan and Implementation Measures

3.1 Environmental Remediation Plan

Action Plan

In order to achieve rapid results in planned rural planning and construction, based on practical needs and the need to quickly change the appearance of villages, it is necessary to invest a large amount of public funds and comprehensively solve the village environment through action plans to promote village transformation. The action plan includes environmental improvement plans (village self action, multi-party participation, government investment behavior, water conservancy facilities, drainage facilities, road facilities).

Environmental Remediation Plan

1. Three major action steps for village environmental autonomy

The three major action steps of villagers' environmental autonomy mainly include villagers' autonomous actions (garbage classification and collection, front and back house renovation) Implement three major action steps, including multi-party participation in demolition of dangerous buildings, space maintenance, and building renovation, as well as government investment in clearing ponds, rivers, channels, public green spaces, public areas, and facility upgrades. Through economic incentives, clarify the boundaries between private spaces, semi public spaces, and public spaces within the village, and guide endogenous incentives: "Public space" is a space shared and used by the entire village; Semi public space "refers to a space shared by the entire village but actually used by one or several households, while" private space "refers to a space within the scope of the homestead that is owned by the household. Clarify the rectification content and responsible parties for various types of spaces: clarify the rectification requirements and action subjects for roads,

buildings, sites, and other types of spaces, and distinguish between collective unified rectification and self rectification by each household.

Through the social dynamic organization of 'full process participation of villagers', villagers take charge of their own planning. Introduce more villagers to participate in the decision-making process, transforming them from "outsiders" to "insiders" in the decision-making process, establishing villagers' trust in village renovation work, and promoting "villagers' environmental autonomy".

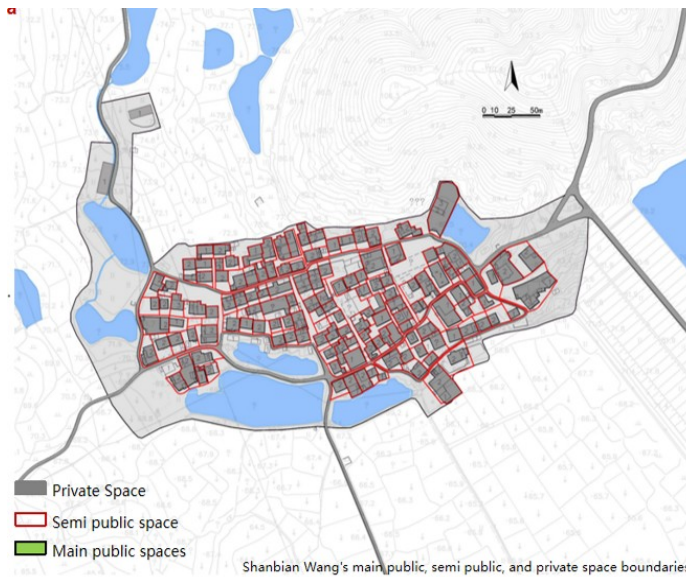
2. Responsibility responsibility area

1) Divide responsibilities into zones

“Public space” is a space shared and used by the entire village; “Semi public space” refers to a space shared by the entire village, but actually used by one or several households. “Private space” refers to the space that belongs to the household and is generally within the scope of the homestead.

2) Clarify the rectification content and responsible parties of various spaces

Clarify the requirements and action subjects for the renovation of various spaces such as roads, buildings, and sites, and distinguish between collective unified renovation and individual household renovation.



3. Step by Step Action Plan - Villager Autonomy Action Plan

3.1 Garbage classification and collection

Now each village bay has equipped garbage cleaners and garbage collection points. The plan should further strengthen efforts, establish a garbage classification and collection system, and guide the classification and collection of garbage in village bays.

Rectification strategy: Increase the internal garbage classification collection bins in the village bay, and in principle, arrange one garbage bin every 50 meters along the main roads of the village bay.

Renovation of current open-air garbage collection points (collection points can use garbage bins, garbage houses, and other garbage collection facilities)

Timely collection, transportation, and maintenance of village cleanliness. Rectification subject: Clean up the public space for each villager in the semi public space on time by the village garbage collector.

3.2 Environmental improvement in front and behind the house

According to the delineation of the responsibility contracting space in the village, clarify the scope of rectification for each household. Rectification content:

Site renovation、 Greening renovation、 Decoration renovation。

Site renovation : Courtyard space: Create a characteristic rural courtyard with "each household has a courtyard and different scenery", ensuring different views of the neighborhood alleys. Surrounding environment of the house: Utilizing local craftsmen and materials to create distinctive landscape elements with a strong local flavor.

4.Step by Step Action Plan - Multi party Participation in Action

Demolition of dangerous buildings Based on the current construction quality and overall spatial structure, plan to partially demolish dangerous buildings and attached buildings, mainly for the three types of existing buildings.

Reserved: 108 households

Demolition: 10 households (including multiple auxiliary buildings)

Rectification ideas: The original site can be transformed into a group public activity space, which can be combined with local characteristics to build flower and fruit racks to meet the needs of production and landscape.

Implementation subject : Villagers actively cooperate in demolishing dangerous houses that affect the appearance of the village or the planning of the new village, and put in labor and effort; The government provides detailed designs for each node and invests in the design.

5.Step by Step Action Plan - Multi party Participation in Action

5.1 Spatial dimension education

The alleyway space is an important carrying area for the texture of the village bay.

This plan aims to carry out targeted spatial maintenance for the lack of distinctive features in the current roadway space, poor roadway surface (cement or dirt road), and monotonous walls on both sides of the roadway.



Road planning map

5.2 drainage works

It mainly includes the main drainage channel system and artificial wetland sewage treatment facilities.

Main drainage channel system: Drainage main channels are arranged along the main roads of the village to collect sewage discharged by each household in a unified manner, mainly in the form of underground channels with a width of 30 centimeters.

Artificial wetland sewage treatment facilities: Utilize the two ponds in front of the village to construct artificial wetland sewage treatment facilities.



Drainage system diagram

(三) Construction project library

In order to promote the implementation of beautiful rural planning and seek government financial support, we will establish a project library and include it in the government's key construction projects. We will adopt a combination of short-term and long-term approaches to orderly promote rural construction, ensure consistency between planning and implementation effects, and quickly and effectively achieve the expected goals within the planning period.

Project Category	number	project name	Project location	Construction scale and content
Construction of Shanbian Wang Environmental Remediation	1	Garbage classification collection bins and garbage classification collection points	Shanbian Wang	Every 50 meters along one side of the main road, there are 25 configurations

on Plan	2	Environmental improvement in front and behind the house	Shanbian Wang	The area is about 10 acres, with green landscapes in front and behind the house
	3	Demolition of dangerous buildings	Shanbian Wang	7 households in total, group public activity venue renovation
	4	Brigade Commune Rectification	Shanbian Wang	Greening landscape and internal renovation of buildings around the commune
	5	Renovation of idle and abandoned characteristic residential buildings	Shanbian Wang	Restoration and reinforcement of new characteristic residential buildings after accommodation
	6	General residential renovation	Shanbian Wang	Whitening and renovation of building facades on both sides of the main road
	7	Laying bricks in the tunnel	Shanbian Wang	1500 meters, brick paving and greening on both sides of the roadway
	8	West entrance public area renovation	Shanbian Wang	3 acres of peach blossom forest at the west entrance
	9	Northeast entrance public area renovation	Shanbian Wang	6 acres of landscape forest at the northeast entrance and stone archway at

				the entrance
	10	Central public venue renovation	Shanbian Wang	Area 1.3 acres, centr al square, greenery, etc
	11	Group public v enue renovation	Shanbian Wang	Covering an area of 1.4 acres, with greenery an d brick laying
	12	Clearing the p ond at the village ent rance	Shanbian Wang	The area is about 8 acres, and the pond is dred ged
	subtot al	——		——
Shanbian Wang Infr astructure Co nstruction	13	Ecological sew age treatment faciliti es	Shanbian Wang	Drainage ditch and ecological sewage treatme nt tank, covering an area o f 8 acres.
	14	Laying of drai nage and irrigation c hannels	Shanbian Wang	The total length is a bout 1900 meters
	15	Night lighting facilities in the villag e	Shanbian Wang	The road is 1300 me ters long, with one lighting lamp installed every 30 m eters on one side of the roa d
	16	Ecological par king lot	Shanbian Wang	Covering an area of 1 acre, the parking lot feat ures ecological tiling, gree

				ning, etc
	17	Shanbianwang Road Surface Improvement	Shanbianwang	The total length of the road is 1300 meters, with an average width of 3 meters. The roadbed and cement pavement will be reconstructed
	subtotal	——		——
Project Category	number	project name	Project location	Construction scale and content
Village core industry project	18	Reservoir waterfront leisure zone	village level	Bashan Waterfront Fishing Park, Rural Barbecue Park, Tent Campsite
	19	Cycling Tea Ceremony	village level	Tea Garden Bicycle Path
	20	Gaoqiao Tea Art Studio	village level	Gaoqiao Li Residence Renovation and Renovation to Tea Art Workshop
	subtotal	——		——
Construction of village infrastructure		Clearing of boundary rivers and reinforcement and improvement of river channels	village level	Village river pond dredging, river embankment reinforcement, landscape beautification, with a water area of about 2000 meter

				s and an area of about 30 acres
		North Ring Road	village level	The road is 1090 meters long and 5 meters wide, with cement concrete pavement, water supply and drainage, greening, etc
		Yunwu North Road	external transportation	The road is 500 meters long and 5 meters wide, with cement concrete pavement, water supply and drainage, greening, etc
		Taolin Road	village level	The road is 980 meters long and 3.5 meters wide, with cement concrete pavement, water supply and drainage, greening, etc
		Chuanqiao Road	village level	The road is 700 meters long and 3.5 meters wide, with cement concrete pavement, water supply and drainage, greening, etc
		Peach Blossom Fragrance Path	village level	The total length of the road is 160 meters, with a width of 5 meters. The roadbed, cement pavement, drainage culverts, and streetlights will be widened a

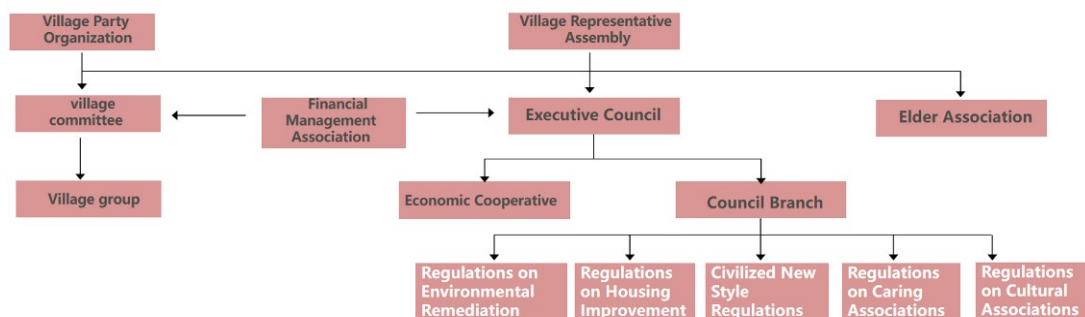
				nd rebuilt
	subtot			
	al			
Rural Urban Leisure Agriculture Project	9	Efficient demonstration base for rice, organic vegetables, and rapeseed	village level	1020 acres, planted with traditional agriculture such as rapeseed flowers, organic vegetables, and rice
	11	Flower planting base	village level	Covering an area of 550 acres, flower cultivation
	12	Dahongtao Planting Base	village level	Covering an area of 635 acres, planted with large red peaches, etc
	13	Nursery Base	village level	Covering an area of 150 acres, planting local characteristic economic seedlings
	subtotal	—	—	—
Long term construction projects		—	Other Village Bays	Other Village Bay Improvement Projects

3.2 Organization of Innovative Village Management

Innovative Village Autonomous Management Organization

To ensure the orderly implementation of the construction of beautiful countryside and reconstruct the rural management order system, a village executive council and sub committees of each group are established.

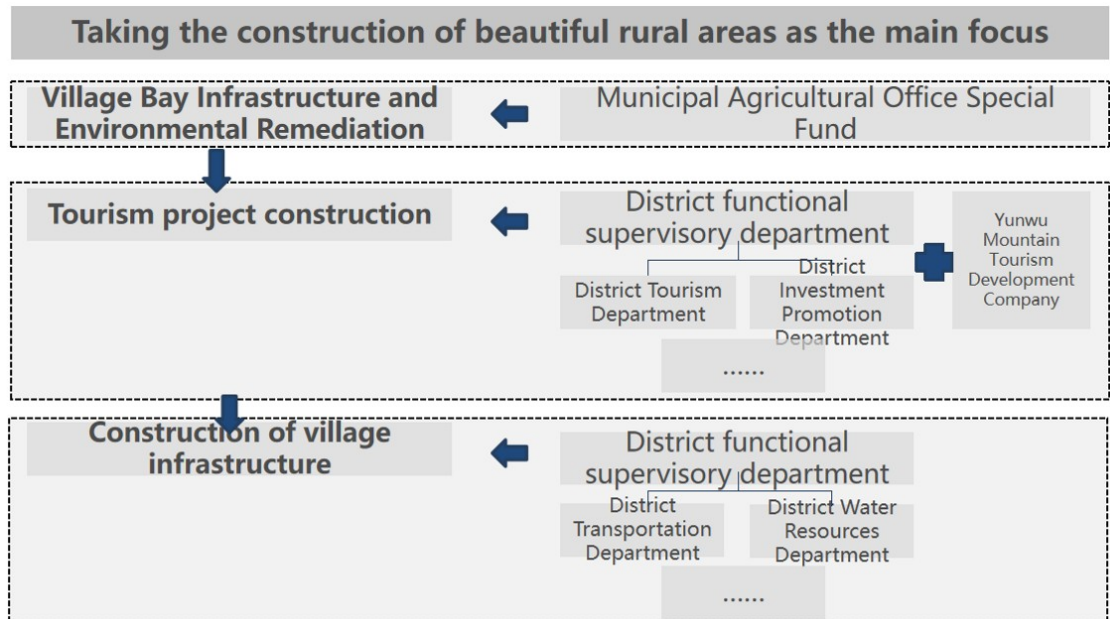
The village "two committees" hold meetings, the village executive council makes decisions, and each group council branch handles affairs, realizing that the masses can discuss, decide, manage, and handle their own affairs.



Collaboration mode

In order to effectively ensure the implementation of rural planning and construction, with the construction of beautiful rural areas as the main body, a working mechanism for joint planning is established to integrate the policy advantages of various government functional departments and market investment forces. On the other hand, innovative organizations for cooperation between villagers and village committees are established to promote the guarantee of rural construction and improve the "joint participation" of villagers. The plan adopts a "cooperation+" model, including "cooperation+" for villagers and village committees, improving the organizational structure of village self governance management, clarifying the mechanism for cooperation between villagers and village committees, and enhancing the ability of villagers to govern themselves; Cooperation+government departments+market, gradually improving the division of powers between governments, dividing

labor among different levels of government, and decomposing project libraries into corresponding functional departments.



Collaboration mode

3.3 Key Construction and Cooperation Projects

1.Environmental Remediation Village Regulations and Civil Agreements

In order to comprehensively promote the comprehensive improvement of the environment, facilitate the implementation of environmental improvement activities, continuously improve the appearance of the village, enhance the civilized quality of villagers, and create a clean, beautiful, civilized and harmonious production and living environment, this agreement is formulated in accordance with relevant laws and regulations, combined with the actual situation of the village.

Article 1: All villagers are the main body responsible for implementing village environmental improvement actions, and have the obligation to participate in infrastructure construction and clean and hygienic activities, and invest in labor.

Article 2: Establish an "Environmental Remediation Activity Council", which is elected by the village head meeting as the chairman and vice chairman. The directors are composed of village group leaders and village representatives.

Article 3: The Clean Rural Activities Council shall organize and implement the comprehensive environmental improvement of the village in accordance with the provisions of this agreement and the decisions of the household head meeting Governance and cleaning of rural areas.

Article 4: The surrounding area of the house is designated as the hygiene responsibility zone for each household, and the responsibility zone, interior, and courtyard should be thoroughly cleaned regularly to remove weeds and hygiene blind spots. Do not litter or splash sewage indiscriminately. The hygiene responsibility area should maintain a long-term absence of sewage, waste packaging materials, and other garbage.

Article 5: The Council for Environmental Remediation Activities shall regularly organize interactive evaluations of the maintenance effects in the responsible areas, and shall provide feedback to families with good maintenance effects Give praise and rewards.

Article 6: All villagers shall consciously maintain good production and living order, and shall not engage in activities in front of or behind houses, alleys, or on both sides of highways The village public places are cluttered with agricultural tools, building materials, firewood, etc; The sidewalk shall not be used as a workshop, and it is strictly prohibited to set up stalls at the entrance Point; It is not allowed to sun dry, harvest crops, or set up stalls on the road.

Article 7: Actively cooperate in the demolition of dangerous buildings that affect the appearance of the village or the planning of the new village, and thoroughly remove abandoned walls and dilapidated structures; Not in front of the door Disorderly construction behind the house.

Article 8: Take care of the greenery and plants in the village. Unauthorized excavation and removal of green flowers and trees, as well as pruning and propagation of green flowers and trees, are not allowed; It is not allowed to encroach on green spaces and public places, or to plant flowers and trees without authorization in public places or village green areas according to personal preferences.

Article 9: Garbage should be sorted and processed. Proactively collect and dispose of recyclable plastics, beer bottles, chicken and duck feathers, and other old items at designated collection points, and promptly sort and dispose of non recyclable household waste into designated dumping sites or garbage bins (pools); Construction waste should be transported to designated locations in counties (villages) for dumping.

Article 10: Standardize the breeding of poultry and livestock. The distinction between humans and livestock is high, and they are raised in China while meeting environmental protection requirements. Utilize biogas digesters and septic tanks; Handle animal manure properly, and do not directly discharge manure or sewage into ditches or tunnels. Dead and dead animals should be disinfected and buried deep in a place that does not affect the quality of drinking water sources.

Article 11: Actively participate in vegetation protection and afforestation work in the area where the water source is located; No planting is allowed within the water source protection area; Planting tree species and crops that are not conducive to water conservation, spraying pesticides and applying herbicides that have an impact on water quality, and using pesticides and fertilizers; must not engage in activities such as mountain refining that are prone to causing wildfires within the water source protection area.

Article 12: Consciously maintain the cleanliness and smoothness of rivers and ditches. Do not dump garbage or discard crop straw into rivers and ditches; Straw, direct discharge of domestic sewage, livestock and poultry

manure; Do not plant crops on the river slope, and do not self mine sand in the riverbed; Do not engage in behaviors such as poisoning fish.

Article 13: Production waste such as pesticide bottles, fertilizer bags, and discarded plastic films shall be collected, sold, or sorted and dumped into garbage bins (pools), and shall not be thrown into river slopes, fields, or water bodies.

Article 14: Strictly control the use of pesticides and fertilizers. Do not apply high residue pesticides; Actively use farm manure and try not to Apply chemical fertilizers.

Article 15: Each household shall pay the sanitation and cleaning fees in a timely manner. Each resident of this village (household) shall pay a monthly cleaning fee of ____ yuan, which shall be used to hire cleaning staff and other expenses related to environmental sanitation in the village; We should actively raise funds and labor to replace and add sanitation equipment, construct and maintain sanitation facilities, and carry out large-scale cleaning activities in the village.

Article 16: The cleaner shall clean the roads and other public places in the village once a day, and transport the garbage to the designated garbage bin Dumping or burning; Timely reminders and dissuasion should be given to the poor hygiene habits and behaviors of villagers by the cleaning staff.

Article 17: The Council shall regularly inspect the work of cleaning up rural areas, hold a quarterly evaluation meeting, and review the environmental sanitation If the cleaning staff is evaluated as unqualified for two consecutive quarters, they will be dismissed and hired by the council.

Article 18: Widely carry out official education and cultivate a civilized village atmosphere. Each household should consciously abide by this agreement, while strengthening the The education and cultivation of children's civilized and hygienic habits, all villagers should promptly remind and boldly stop behaviors that violate this agreement.

Article 21: For those who violate this agreement, the Council shall levy an environmental sanitation maintenance fee of 50 yuan each time, or the defaulting party shall be obligated to Clean up the village for a day.

Article 22: This agreement shall be implemented after being approved by the village assembly.

2. House renovation village regulations and agreements

In order to comprehensively promote housing renovation, improve the village's appearance, transform development demands into commercial models, enable tourists to comfortably vacation or reside in the countryside on a regular basis, and also drive rural renewal, this agreement is formulated based on the actual situation of the village.

Article 1: Establish a "Housing Improvement Action Council", with the chairman and vice chairman elected by the village head meeting. The directors are composed of Composed of village group leaders and village representatives.

Article 2: The Housing Improvement Action Council shall organize and implement the housing improvement work in this village in accordance with the provisions of this agreement and the decisions of the homeowners' meetingdo

Article 3: Encourage the transfer of the right to use idle rural houses to village cooperatives, and the head of the household shall invest in the village cooperative with the property rights of the house, which shall be managed by the village cooperativeThe cooperative signs a contract with the head of the household to retain ownership of the property, and the village collective rents out the idle farmhouses to other units or individualsHuman management, negotiated operation period, unified maintenance, use, and operation by the operator.

Article 4: The use of rented houses shall refer to village planning and solicit opinions from interested villagers, village organizations, and local

governmentsImplementation can only be carried out with the consent of the household head and the village collective.

Article 5: When renovating old houses, clarify the principle of restoring the old as it is. Try not to change the appearance and main structure of the building, use raw materialsRepair materials and original processes to improve internal comfort, add heating, cleaning and other facilities, and inform households of every changeMaster, seek the consent of the homeowner.

Article 6: The Housing Improvement Action Council shall organize local craftsmen to establish construction teams and organize corresponding training to improve the teamTechnical level.

Article 7: Designated public buildings shall be preserved and protected, and unauthorized use and destruction shall be prohibited.

Article 8: Encourage villagers to repair local buildings with certain characteristics, which shall be coordinated by the Housing Improvement Action Councilhelp.

Article 9: Encourage villagers to beautify the facades, walls, etc. of their own houses according to the planning and design scheme, and carry out house renovation workNegotiate with the village collective at the council meeting and provide certain rewards.

Article 10: This agreement shall be implemented after being approved by the village assembly.

3.Civilized New Style Village Regulations and Customs

In order to meet the needs of the national strategy of building a new socialist countryside and promote the spiritual civilization construction of Bashanzhai Village, this agreement is formulated.

Article 1: Establish a "Civilized New Style Association", with each group having one association director and several officials, and villagers voluntarily participatingBecoming a member has no limit on the number of members.

Article 2: Under the leadership of the village executive council, the Civilization New Style Association promotes the physical health of villagers based on public order and good customs. With the goal of promoting mental health and harmony for all, we will carry out activities to promote a civilized new style through education, warning, and evaluation.

Article 3: Under the leadership of the Civilized New Wind Association, actively cooperate with other functional organizations in the village, and guide villagers to travel. Promote the construction of various aspects in this village.

Article 4: Advocate hard work to get rich, honest transactions, support education and learning, encourage villagers to work hard in farming, honest buying and selling, and prostitution. Licun Middle School students work hard, strive for self-improvement, cultivate a civilized village atmosphere, and create a beautiful home together.

Article 5: Guide villagers to speak in a civilized manner, dress neatly, refrain from littering, and regulate various daily behaviors.

Article 6: Regularly hold health knowledge lectures to educate villagers on abandoning unhealthy habits and maintaining good physical health.

Article 7: Regularly hold cultural and entertainment activities to meet the health and entertainment needs of villagers;

Article 8: Resolve neighborhood disputes, assist disadvantaged villagers, and jointly build harmonious neighborhoods and warm homes.

Article 9: The Civilized New Wind Association shall take the lead in formulating standards for civilized villagers and civilized families, and carry out various evaluation activities.

Article 10: Members of the association should issue warnings in a civilized manner to encourage villagers to correct their uncivilized behavior.

Article 11: This agreement shall be implemented after being approved by the village assembly.

4、 Regulations on the Work of the Care Association

Responsible for establishing records of village care recipients and conducting regular follow-up visits;

Responsible for providing material assistance and spiritual condolences to various objects in need of care in the village;

Responsible for carrying out multi-level and multi-channel care fund donation work, and establishing a long-term mechanism;

Connect with resources inside and outside the village, and carry out various forms of mental health activities;

Organize timely selection and commendation activities for outstanding figures in the self-improvement of Bashanzhai Village.

5.Regulations on the Work of Cultural Associations

1. Develop, excavate, and organize historical materials of the village, including both tangible and intangible heritage;

2. Connect with cultural resources inside and outside the village, carry out diverse and entertaining activities to promote and educate traditional Chinese culture, especiallyIt is a cultural learning activity aimed at children, women, and the elderly;

3. Regularly collect and organize internal and external promotional materials for Bashashan Village. Assist the two committees and the council in doing a good jobExternal reception and publicity work;

4. Manage the rural library in Bashanzhai Village. Leading the masses to carry out various activities of learning culture and knowledge;

5. Cooperate with the Civilization New Style Association to organize timely selection and commendation activities for outstanding figures and families in learning culture.

Conclusions

The analysis of the current state of Bashanzhai Village reveals that its geographical location in the Huangpi District of Wuhan City offers significant potential for development due to the availability of natural resources. However, the current land use structure and demographic situation require attention, as a large portion of the land is underutilized, and the predominantly elderly population poses additional challenges for social and economic stability. The existing infrastructure needs modernization to improve the quality of life for local residents.

The developed strategies for the village's development have clear goals aimed at improving the quality of life and economic conditions through structural changes. One of the key objectives is to create sustainable rural development by optimizing the use of natural resources and land plots. The spatial planning of the village involves integrating rural areas with surrounding zones to ensure the harmonious development of residential and industrial infrastructure. Furthermore, the creation of new development models for the rural economy, particularly through agriculture and industry, will ensure employment and increased incomes.

The implementation of the development plan must focus on environmental remediation and the restoration of the surrounding environment, which is an essential step in improving residents' health and preserving natural resources. Additionally, it is important to introduce an innovative approach to village management, incorporating modern technologies and management models at the local level. Priority projects will include those related to the modernization of infrastructure, the construction of residential and social

facilities, as well as the development of rural tourism and small businesses, which will create jobs and attract investments.

As a result of the planned measures, Bashanzhai Village has the potential to become a modern, economically stable, and environmentally clean settlement that attracts both local and external investors.

List of references

1. Howard, E. *Garden Cities of To-Morrow*. London: Faber & Faber, 1946.
2. Ratzel, F. *Anthropogeography*. Stuttgart: Macmillan, 1891.
3. Fan, C. C. *Rural Development in China: Theories and Case Studies*. Oxford University Press, 2015.

4. Liu, Y., Li, J., & Yang, Y. *Strategic Planning for China's Rural Revitalization: Principles and Practices*. *Journal of Rural Studies*, 2019.
5. Long, H., Zou, J., & Pykett, J. *Spatial restructuring and sustainable rural development in China*. *Land Use Policy*, 2011.
6. Marsden, T. *The Condition of Rural Sustainability*. Van Gorcum, 2003.
7. Friedmann, J. *Planning in the Public Domain: From Knowledge to Action*. Princeton University Press, 1987.
8. Zhang, L., & Zhao, S. *Rural-Urban Migration and Development in China*. Routledge, 2001.
9. Albrechts, L., Healey, P., & Kunzmann, K. R. *Strategic Spatial Planning and Regional Governance in Europe*. *International Journal of Urban and Regional Research*, 2003.
10. Healey, P. *Collaborative Planning: Shaping Places in Fragmented Societies*. 2nd ed., Macmillan, 2006.
11. Xu, Y., Zhang, Y., & Li, T. *Spatial Planning Strategies in the Context of Rural Tourism Development in China*. *Tourism Management Perspectives*, 2016.
12. Li, X., & Wang, Y. *Integrated Urban-Rural Development Planning in China*. *Planning Perspectives*, 2019.
13. Hall, P. *Cities of Tomorrow: An Intellectual History of Urban Planning and Design in the Twentieth Century*. Wiley-Blackwell, 2014.
14. Li, J., & Liu, Y. *Exploring the Sustainability of Rural Settlements in China*. *Land Use Policy*, 2018.
15. Gu, H., & Ryan, C. *Tourism Development, Rural Livelihoods and Conservation in China*. *Journal of Sustainable Tourism*, 2008.

16. Gao, J., & Wu, B. *Ecotourism in China's Rural Areas: Opportunities and Challenges*. *Tourism Management*, 2017.
17. Liu, Y., & Li, Y. *Revitalize the World's Countryside*. *Nature*, 2017.
18. Fan, J. *Planning and Transformation of Chinese Rural Communities*. Springer, 2021.
19. Chen, A., & Qiu, X. *The Role of Rural Tourism in Revitalizing Rural Areas in China*. *Asia Pacific Journal of Tourism Research*, 2019.
20. Forman, R. T. T. *Land Mosaics: The Ecology of Landscapes and Regions*. Cambridge University Press, 1995.
21. Wu, J., & Hobbs, R. J. *Key Issues in Landscape Ecology: Ecological Perspectives for Spatial Sustainability*. Cambridge University Press, 2007.
22. Lu, Y., & Zhang, J. *Ecological Planning and Sustainable Rural Development in China*. *Environment, Development and Sustainability*, 2018.
23. Pretty, J. *Sustainable Agriculture and Food*. Earthscan, 2008.
24. Zhang, W., & Sun, T. *Public Service Provision and Infrastructure Development in Chinese Villages*. *Habitat International*, 2016.
25. Chan, K. W., & Buckingham, W. *Urbanization and Rural Development in China: Recent Trends and Challenges*. *China Quarterly*, 2008.
26. Ploeger, H. D. *Social Infrastructure in Rural Communities: Planning and Development*. *International Journal of Rural Development*, 2015.
27. Yin, R. K. *Case Study Research and Applications: Design and Methods*. SAGE Publications, 2018.
28. Creswell, J. W., & Creswell, J. D. *Research Design: Qualitative, Quantitative, and Mixed Methods Approaches*. SAGE Publications, 2018.

29. Bryman, A. *Social Research Methods*. Oxford University Press, 2015.

30. National Development and Reform Commission of China (NDRC). *Rural Revitalization and Development Report*. Beijing, 2021.