

**IMPACT OF COOL ROOFING MEMBRANES ON THE
HYGROTHERMAL PERFORMANCE OF LOW-SLOPED ROOF
STRUCTURES IN TIMBER CONSTRUCTION**

Carinthia University of Applied Sciences, Spittalander Drau, Austria

This paper will present an analysis regarding the hygrothermal performance and furthermore durability of non-ventilated light-weight flat roofs with cool roofing membranes in the Central European climate.

The main focus is the assessment of the drying potential of selected roof variants to predict the potential risks of mold and especially wood decay fungi growth inside the constructions. Several numerical simulations were carried out to investigate the influence of different roofing membranes and especially cool roofing products on the overall hygrothermal conditions inside the constructions.

Additionally to that, roof assemblies with cool roofing membranes were investigated at the Austrian BSRTU Building Science - Research & Test Unit outdoor test facility (www.building-science.at) of the Carinthia University of Applied Sciences (CUAS). In situ measurement results, taken at this experimental set-up will be discussed.

INTRODUCTION

This paper presents first results of a research project on the durability of non-ventilated, highly- insulated timber-framed low-sloped roofs in the climate of Central Europe. The primary aim of the work was to investigate the influence of different colored roof membranes on their hygrothermal response. The calculations were performed for light-grey, dark-grey and especially white colored (cool roofing) membranes, basically looking to their drying potential due to solar-driven diffusion. It is important to note, that usually in Austria, according to code OENORM B8110-2, avoiding interstitial condensation is evaluated using the dew-point-method (Glaser scheme). However, the method as applied in the code, only considers very simplified steady-state boundary conditions. Neither solar radiation and undercooling, nor wetting processes, and hygroscopic sorption, nor liquid transport are taken into account. Therefore, the scope of this study is to predict the long-term durability as realistically as possible using transient hygrothermal calculations.

INVESTIGATED CASES

In the frame of the research, the drying potential of prefabricated timber low-sloped roof constructions, which are used more and more for larger commercial and production, but also residential buildings in Austria, was analyzed. These roofs are typically prefabricated and consist of 400mm (16") high timber beams faced with OSB decking at both sides. The space

inbetween the beams is filled with blown-in cellulose insulation. Based on this base case, 3 variants with different colored waterproofing membranes were analyzed (Figure 1 & 2). All analyses assumed the roof structures cases 1 to 3 to be air-tight and the insulation correctly installed, so no convective vapor flow could develop, affecting moisture build-up.

Cases (Layers from out- to inside)		
Case 1	Case 2	Case 3
Roof Membrane; Type: Plastic (Polyolefin); Permeance = 0.1426perm; (s _d -Value = 23m)		
Color: white (cool roofing) Solar Reflectance: ~ 0,78 (*)	Color: light-grey Solar Reflectance: ~ 0,65 (*)	Color: dark-grey Solar Reflectance: ~ 0,50 (*)
Oriented Strand Board (OSB) 15mm (5/8")		
Cellulose Blown-in Insulation 400mm (~16")		
Code approved Vapor Retarder, Permeance = 0.0252perm (s _d -Value = 130m) (**)		
Oriented Strand Board (OSB) 15mm (5/8")		
(*) Solar Reflectance measured according to ASTM E903: Material data from used products (spec sheet) were inserted in simulation. Note, that these values are representing initial conditions, ignoring weathering effects. The influence of soiling (decrease of solar reflectance) during the course of the years is part of the research work at the CUAS outdoor test facility.		
(**) Vapor retarder with permanent s _d - value. No smart vapor retarder with variable s _d - value.		

Figure 1. Investigated roof assemblies, cases 1 to 3

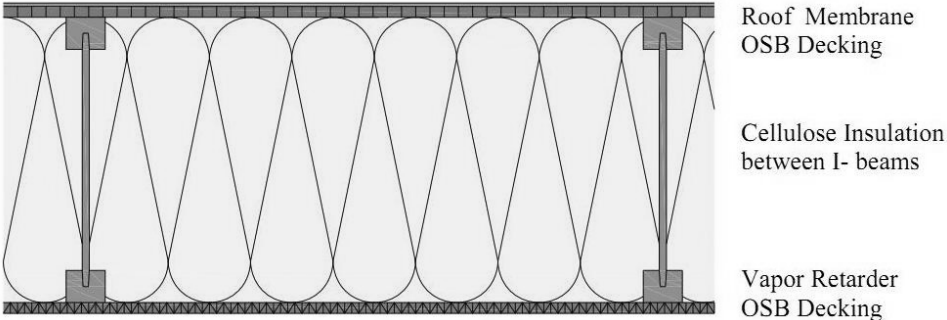


Figure 2. Schematic draft of investigated roof assemblies, cases 1 to 3

Material	Bulk density [kg/m ³]	Porosity [m ³ /m ³]	Heat capacity [kJ/kgK]	Heat conductivity dry [W/mK]	Diffusion resistance factor dry μ [-]
Oriented strand board (OSB)	615	0,6	1880	0,101	Ø 175
Cellulose	50	0,95	2000	0,038	1,8
(*) Material data taken from respective product spec sheets, approved by third party laboratory report.					

Figure 3. Material properties

SIMULATIONS

The simulations were carried out with the WUFI®. (Wärme und Feuchteinstationär - Transient Heat and Moisture) software, developed at the Fraunhofer Institute for Building Physics (Kuenzel1994) in Holzkirchen/Germany and validated against outdoor measurements and laboratory tests.

The analysis was conducted under the assumption that the roof structures had good air tightness and insulation installation, and thus without convective vapor flow affecting moisture build-up.

Default program settings

The surface film coefficient at the inside surface was set equal to 8 W/(m²K). Exterior climate data and surface temperatures, measured at 3 roof sections with different colored membranes (white, light-grey, dark-grey) at the BSRTU - Building Science Research & Test Unit outdoor test facility were chosen as exterior boundary conditions.

The room climate varied as a sine curve between 20 °C and 40 % relative humidity in winter and 22 °C and 60 % relative humidity in summer. As initial conditions for the materials 20 °C and a RH of 80 % was chosen (Karagiozis 1998). Such higher moisture content (i.e. 80 %) may be due to rain during transport and mounting of large roofs structures or even due to flank diffusion over adjacent masonry (Kuenzel 1996).

The material parameters required for each material were taken from respective product spec sheets, approved due to third party laboratory report. (Figure 3). The hygrothermalbehaviour was simulated over a period of five years, starting on October 1st

RESULTS

The results concern the hygricbehaviour of the assemblies. Moisture tolerance in fact is a critical performance in building envelope design. Hence, for analysing the drying potential, total water content in the whole construction was calculated . Further the water content in the different layers and especially the timber based ones was analyzed to assess the possibility of wood decay. According to Austrian codes the critical limit for the moisture ratio in timber is 20 mass percent (M%) although it is well known, that wood deterioration mainly occurs at higher levels and long exposure time. In addition, also the relative humidity and temperatures in the interfaces between cellulose and the exterior OSB decking and the interior vapor retarder was calculated to assess the risk of mold growth based on the exposure time. In the graphs, results for the whole period of five years are shown.

Total Water Content (TWC)

First, simulations were carried out to investigate total water content for case 1,2 and 3. Figure 4 shows the results (TWC) for the five years period. All cases dry. Anyhow, the white colored cool roofing membrane applied in case 1 has the most significant influence on remaining moisture in the roof. Total water content (TWC) in case 1 with cool roofing membrane, levels off at a seasonal maximum

of $-3,8 \text{ kg/m}^2$ after about 5 years. Case 2, with a light-grey membrane is showing an improved and even faster dry ability. The total water content levels off at a seasonal maximum of $\sim 3,6 \text{ kg/m}^2$. Case 3 with the dark- grey colored waterproofing membrane shows the fastest drying rate of all variants. Higher temperatures at the exterior surface, due to a higher short wave absorptivity of the membrane, in fact increase the inwards vapor pressure gradient accelerating drying that way. The total water content levels off at a seasonal maximum of $-3,55 \text{ kg/m}^2$ after five years.

Clearly inward drying capacity should be considered as an important design factor. (PowellandRobinson, 1971, Straube, 2001, Desjarlais, 1995)

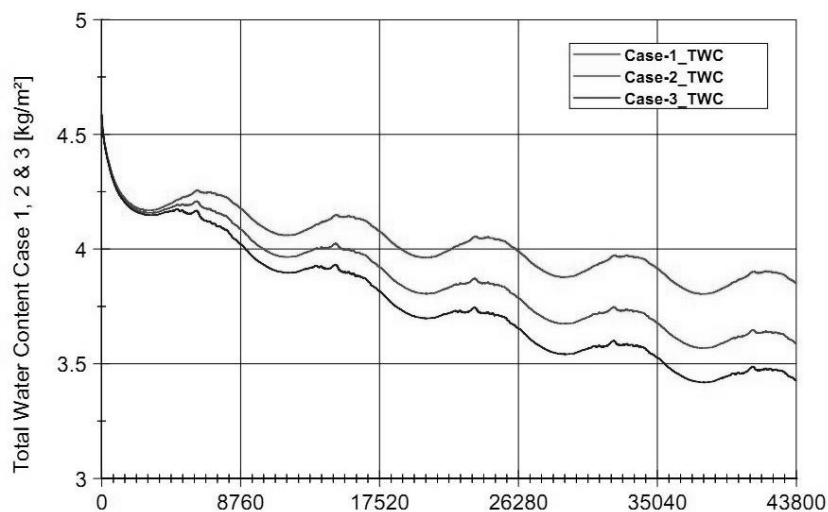


Figure 4. Calculated Total water content (TWC) of cases 1,2 and 3

Water Content (WC) exterior OSB decking.

The next step in this parametric study was to predict the moisture response of the wooden components and especially the exterior OSB decking. In Figure 5 one can observe that the moisture content of the OSB for all cases is exceeding 20 M% during the first wintertime and then decreasing over the years. In cases 2 and 3, the water content decreases faster during the first five years and levels off at about -135 kg/m^3 (Case 2) and $\sim 120 \text{ kg/m}^3$ (Case 3) respectively, during the winter time in the 5th year and therefore below or rather slightly above the critical limit of 20 M%.

Only the moisture content of the exterior OSB in case 1 with the white colored cool roofing membrane remains at a higher humidity level during all five winter periodes increasing beyond 20 M %. This effect is quite crucial for the practical application since the unscheduled moisture within the construction will be trapped inside the roof construction for a longer time due to poor solar-driven diffusion. This potential higher humidity level during long periods would endanger the risk of mold or even decay fungi growth and hence a potential premature constuction failure.

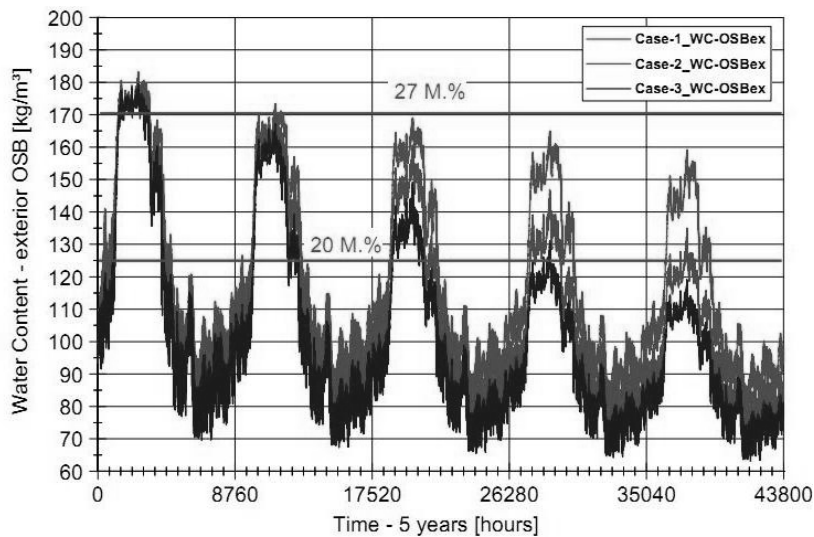


Figure 5. Calculated moisture content (by mass) of the external OSB, cases 1, 2 and 3

Relative Humidity on the interface to Cellulose.

In addition, also the relative humidity on the interface between external OSB decking and the cellulose insulation was calculated to assess the risk of mold growth (Figure 6). The simulations were started with an initial moisture content of 80 % RH. This higher moisture content at the start is useful to predict the construction's dryability. The simulation is predicting a higher RH of 95 % during the 1st winter for all constructions, due to the higher initial moisture conditions. In principle, mold growth is possible at RH of >80 % and >5 °C. In Figure 6 it is also well to see, that case 2 with a light-grey colored membrane and case 3 with a dark-colored membrane are showing the best dryability. The RH at the interface external OSB- cellulose is therefore continuously decreasing during the time of investigation and remains below the critical border of 95 % RH after the 5th year. In addition, in case 1 with the cool roofing membrane the RH. remains above 95 % RH. every wintertime.

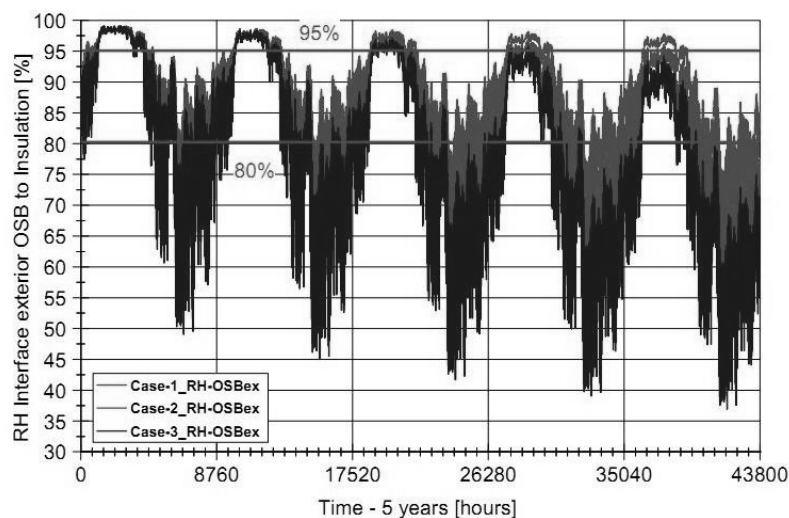


Figure 6. Relative humidity at the external OSB-cellulose interface, cases 1, 2 and 3

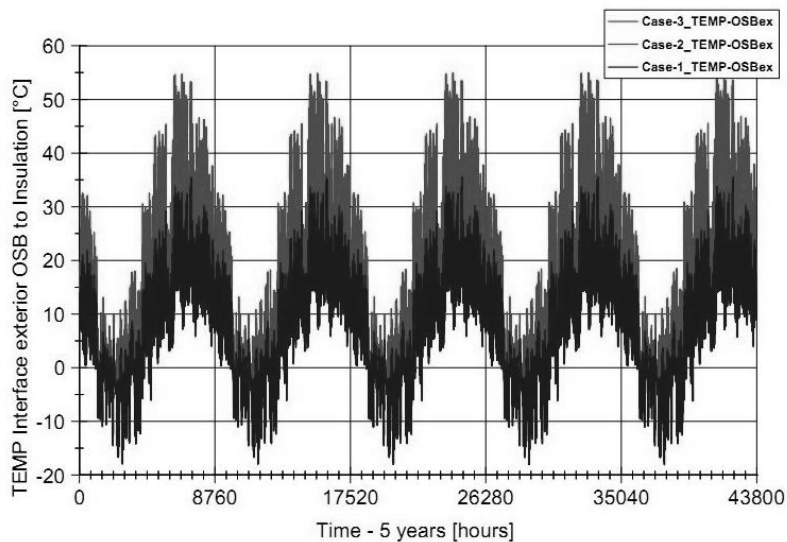


Figure 7. Temperature at the external OSB-cellulose interface, cases 1, 2 and 3

Cases 2 and 3 are showing a decreasing gradient, but nevertheless 80 % RH are exceeded during some weeks within wintertime when the temperatures (Figure 8) are reduced. It has to be noted that blown-in cellulose is blended with fungicides like boric acid, boric pentahydrate, etc. by default. In cases of a direct contact between wooden surfaces and cellulose, these additives should limit the germination of mold growth under moisture conditions between 80 and 90 %. The effectiveness of the above mentioned fungicidal additives in wooden constructions has been investigated in a laboratory test at the Carinthia University of Applied Sciences and in-situ measurement results from practice confirm this theory. Due to the lower temperatures during this time of the year and the fungicidal influence of cellulose, mold germination should be reduced or even limited, if cases 2 and 3 are executed with dry materials.

Furthermore, the calculation of the relative humidity at the interface between the OSB board and the cellulose in case 1 with the cool roofing membrane indicates a potential risk of mold growth during the whole period of investigation. Figure 6 illustrates, that the RH is exceeding 80 % for several months during the first five years with a seasonal maximum of 90 to 95 % RH. Mold growth is therefore likely to occur.

Provided that a good workmanship was done, only the roof constructions case 2 and 3 are showing a relatively good hygric behavior. Under this circumstances moisture related problems like mold and wood decay fungi growth at the exterior OSB boards should be avoided in these cases.

In a second step, the relative humidity at the interface between cellulose and the interior vapor retarder was calculated. It is well to see, that in variants 2 and 3 the RH at the interface between cellulose and internal vapor retarder is generally exceeding 80 % RH during the 1st and 2nd summer due to the assumed higher initial moisture conditions (Figure 8). The higher short wave absorptivity of the light-grey and dark-grey colored membranes is improving the solar driven inwards diffusion, and hence a higher RH at the interface of the vapor retarder

foil and the cellulose is occurring. Case 1 with the cool roofing membrane is showing a continuously decreased gradient and is remaining below 80 % RH without the risk of mold germination, because the lower surface temperatures are reducing inward diffusion drying.

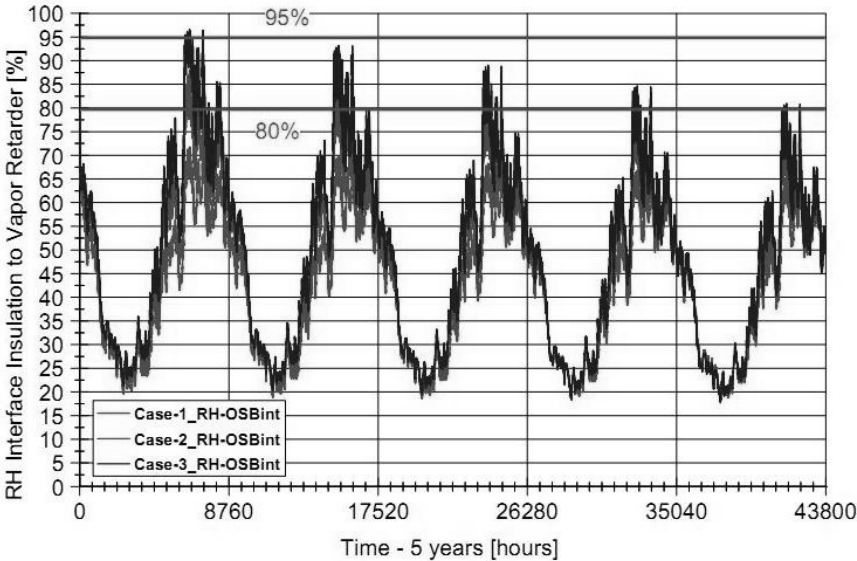


Figure 8. Relative humidity at the internal vapor retarder-cellulose interface, cases 1, 2 and 3

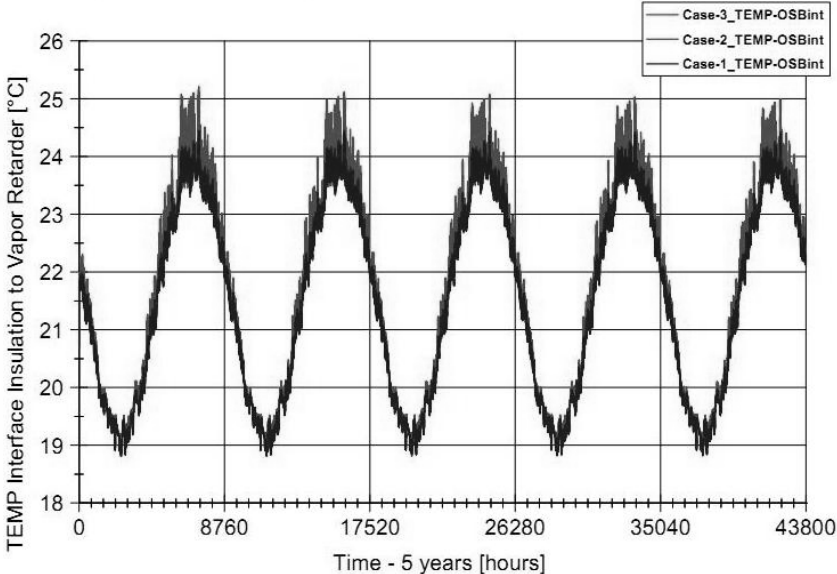


Figure 9. Temperature at the internal vapor retarder-cellulose interface, cases 1, 2 and 3

IN SITU MEASUREMENTS AT BSRTU OUTDOOR TEST FACILITY.

In 2010, several low sloped roof construction test assemblies were installed at the CUAS outdoor test facility, built in South Austria. One part of the roof section was used to investigate the hygrothermal performance of selected roof systems executed with different waterproofing membranes. For the roof assemblies a construction system similar to the previous calculated cases 1, 2 and 3 respectively, with OSB deckings on both sides of the timber I-beams

and vapor retarder foils was chosen. All roof components are equipped with special measurement systems. The measurements started on December 30, 2010 and are still ongoing. The weather data is recorded using two separate weather stations and also the indoor conditions are monitored continuously. The slope of the investigated roof sections is 2° northwards.



Figure 10. In situ measurements at BSRTU Outdoor Test Facility

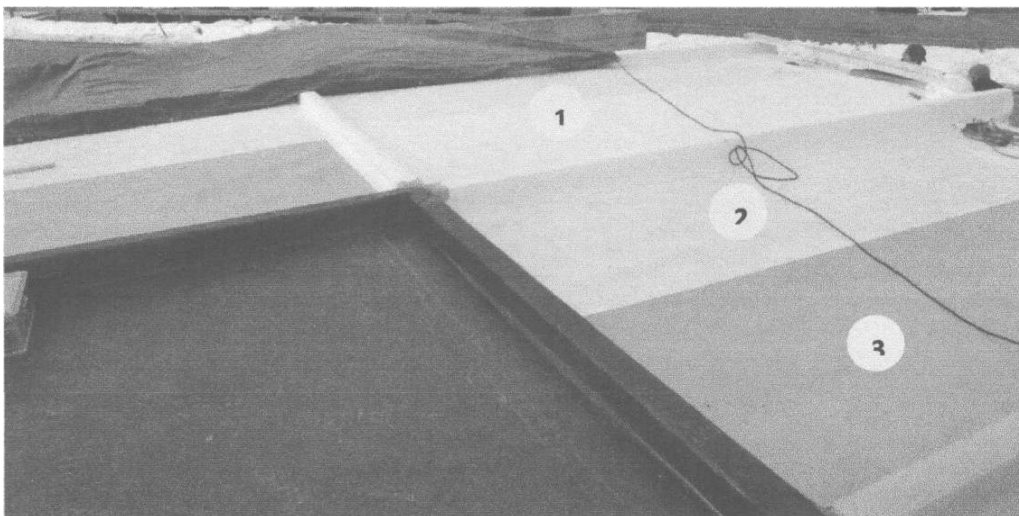


Figure 11. Test assemblies for in-situ measurements

Results - in situ measurements.

In this section measured results for the period January 2011 to January 2012 are presented. On the interfaces between the external OSB decking and the internal vapor retarder foil to the cellulose insulation layer capacitive humidity and temperature sensors were installed to measure the hourly values for relative humidity and temperature (Figure 12). On the internal and external roof surfaces additional temperature sensors were applied and the climate data in- and outside the building was monitored continuously. In addition, optical radiation sensors were installed to verify the climate data which were used during the previous simulations.

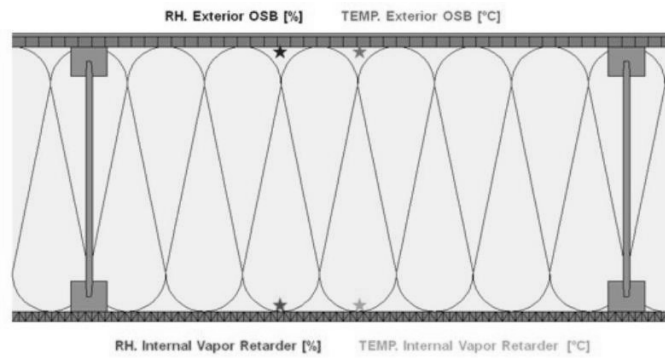


Figure 12. Positioning of sensors in test assemblies

Figures 13 and 14 are providing an overview about the measured data concerning outside climate and the solar radiation on the roof constructions.

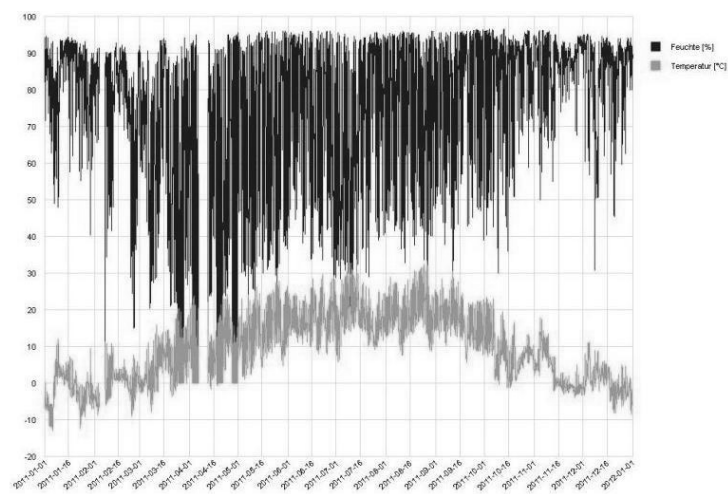


Figure 13. Measured exterior climate (relative humidity, temperature)

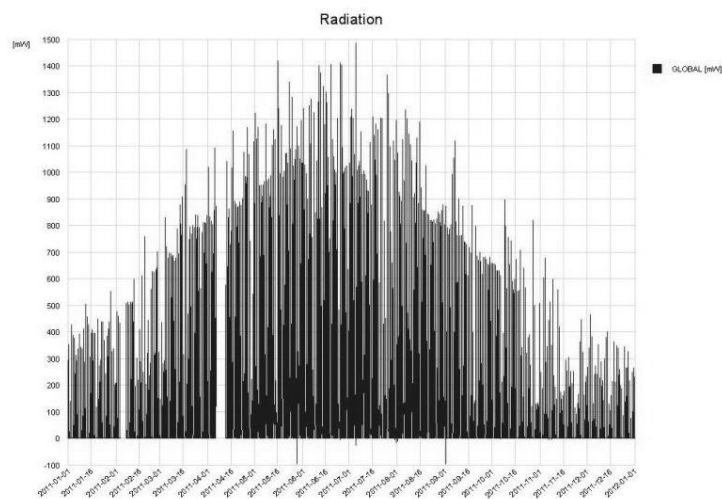


Figure 14. Measured solar radiation on roof surfaces

The measured relative humidity and temperature (°C) values within the roof constructions are presented in Figure 15,16 and 17.

In case 1 with the cool roofing membrane the RH at the interface external OSB and cellulose is varying between -62 % RH in summer and -100 % RH during wintertime (Figure 15). It is also well to see, that the RH. is oscillating at a higher rate between - 70 and - 80 % RH during the periode from spring to fall. Due to the higher temperatures during this time, also a certain risk of mold growth cannot be disregarded, but until now, no distinctive mold or wood decay fungi growth was detected during probing. Nevertheless ifs important to note, that a higher water content of the exterior insulation was detected. Hence if s necessary to wait, how the future moisture development will proceed.

In addition, the RH at the interface between cellulose and internal vapor retarder is increasing up to -75 % RH in summer and up to -30 % RH in winter. Due to the white roofing membrane lower surface temperatues are generated and hence a reduced solar-driven inward diffusions is occurring.

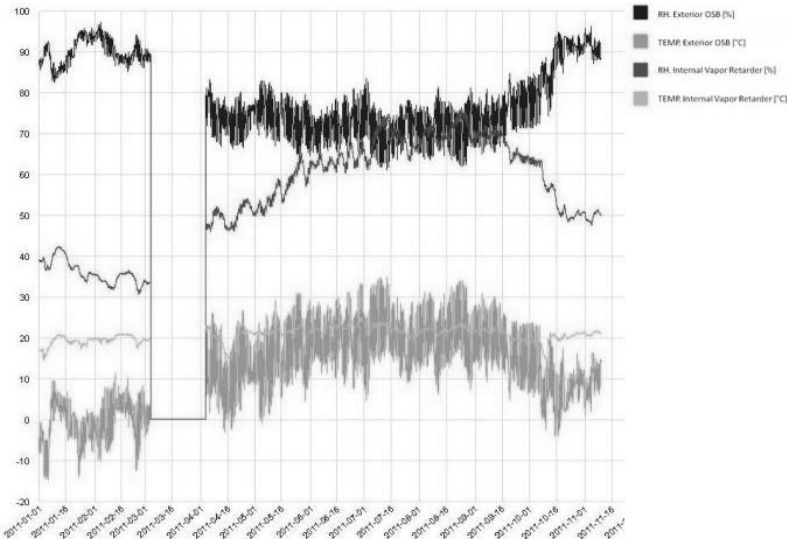


Figure 15. Relative Humidity and temperatures in test assembly 1 with white roofing membrane

Figure 16 is presenting the relative humidity and temperature values within case 2, executed with a light-grey colored roofing membrane.

The RH value below the exterior OSB decking is leveling between -50 % RH in summer up to -95 % RH during a few days in winter. Although the critical limit for mold germination, 80 % RH was exceeded, no mold or wood decay fungi growth was detected during inspections until now. That s reasonable, because temperatures at this time are quite low and it is assumed, that the fungicidal additives in the cellulose are reducing the possibility of fungi germination on wooden surfaces, provided that a proper contact between cellulose and timber is given.

According to that, also the relative humidity on the interface between cellulose and the internal vapor retarder was measured. The RH. is leveling between - 25 % RH. in winter and - 78 % RH. during summertime. The higher RH. gradient is founded in the higher solar driven diffusion due to the darker

membrane surface. Nevertheless the critical limit of 80 % RH is not exceeded, hence mold related problems are to be neglected.

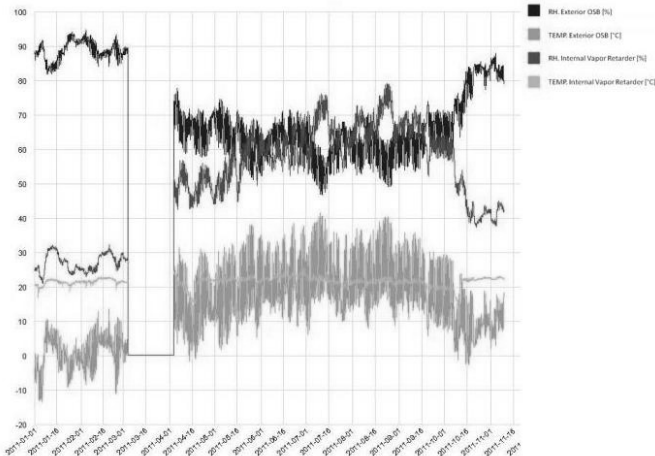


Figure 16. Relative Humidity and temperatures in test assembly 2 with light-grey roofing membrane

Figure 17 is presenting the relative humidity and temperature values within case 3, executed with a dark-grey colored roofing membrane.

The RH value below the exterior OSB decking is leveling between -45% RH in summer up to -92 % RH during a few days in winter. Analogical to case 2, the critical limit for mold germination, 80 % RH was exceeded, but no mold or wood decay fungi growth was detected during probing until now.

According to that, also the relative humidity on the interface between cellulose and the internal vapor retarder was measured. The RH. is leveling between ~ 22 % RH. in winter and - 88 % RH. during summertime. The higher RH. gradient is founded in the higher solar driven diffusion due to the dark membrane surface. Although the critical limit of 80 % RH was exceeded during higher temperatures, no mold related problems have been found.

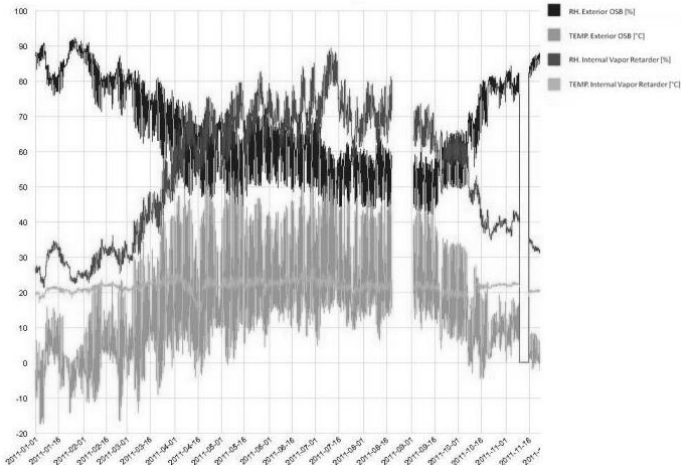


Figure 17: Relative Humidity and temperatures in test assembly 3 with dark-grey roofing membrane

DISCUSSION AND CONCLUSIONS.

This paper presented initial results concerning the hygrothermal behavior of non-ventilated, highly- insulated timber-frame flat roofs with different waterproofing membranes in the climate of Austria. The investigations indicated that different colored waterproofing membranes are seriously influencing the external roof surface temperatures due to varying short wave absorptivity.

The varying surface temperatures are strongly influencing the moisture migration and accumulation and therefore the durability performance of low-sloped roof constructions. Darker membranes increase the temperatures in the exterior part of the roof assemblies and therefore optimize the solar-driven diffusion to the interior. Light-colored and especially white cool roofing membranes are reducing this effect, hence a dryability of the roof construction is limited and moisture related problems are likely to occur.

Summing up, it is mentioned, that aspects of thermal insulation and moisture control need to be investigated in common. A varying coloring of waterproofing roof membranes has to be considered as a critical factor, influencing the dryability of unventilated low sloped roofs and modern computer based simulation models may be used to analyze the hygrothermal performance within the early design process.

References

1. OENORM B8110-2, "Thermal insulation in building construction - Part 2: Water vapour diffusion and protection against condensation", Austrian Standards Institute, 2003.

2. *Künzel, H.M.* 1994. Verfahren zur ein- und zweidimensionalen Berechnung des gekoppelten Wärme- und Feuchtetransportes in Bauteilen mit einfachen Kennwerten, Ph D thesis, University Stuttgart.

3. *Karagiozis, A.* 1998. Applied moisture engineering, page 241, Conference Proceedings Thermal Performance of the Exterior Envelopes of Buildings VII, Clearwater Beach, Florida.

4. *Kuenzel, H.M.* 1996, Tauwasserschäden im Dachaufgrund von Diffusion durch angrenzendes Mauerwerk, wksb 41/1996, Heft 37, Seite 34-36.

5. WTA - Wissenschaftlich-Technische Arbeitsgemeinschaft für Bauwerkserhaltung und Denkmalpflege, 2002, Merkblatt 6-2-01 /D 'Simulation waerme- und feuchtetechnischer Prozesse'.

6. *Powell, F.J, and Robinson, H.E.* 1971, The effect of moisture on the heat transfer performance of insulated flat-roof constructions, Building Sciences Series 37, Gaithersburg, National Bureau of Standards.

7. *Straube, J.* 2001. The influence of low-permeance vapor barriers on roof and wall performance, Conference Proceedings Performance of Exterior Envelopes of Whole Buildings VIII, Clearwater Beach, Florida.

8. *Desjarlais, A.* 1995, Self-drying roofs: What?! No dripping!, Conference Proceedings Thermal Performance of the Exterior Envelopes of Buildings VI, Clearwater Beach, Florida, page 763.

9. *Weiß, B., Wagenfuhr, A. and Kruse, A.* 2000. Beschreibung und Bestimmung von Bauholzpilzen.

10. *Hens, Hugo.* 2010, Applied Building Physics - Boundary Conditions, Building Performance and Material Properties.

11. *Hens, Hugo.* 2012, Performance Based Building Design 2: From Timber-Framed Construction to Partition Walls.

12. *Hens, Hugo.* 1975, Theoretical and experimental study on the hygrothermalbehaviour of building and insulation materials during condensation and drying with application on low-sloped roofs, doctoral thesis, KU.Leuven.

13. *Hens, Hugo.* 1987, Envelope solutions for residential construction: low-sloped roofs, Final report RD Energy, Services of the Ministry of Scientific Policy.

**ВОЗДЕЙСТВИЕ КРОВЕЛЬНЫХ МЕМБРАН НА
ГИГРОТЕРМАЛЬНЫЕ ХАРАКТЕРИСТИКИ ПЛОСКИХ
ПОКРЫТИЙ, ВЫПОЛНЕННЫХ ИЗ ДЕРЕВА**

Кристоф Бахбаум, Саймон Полити

Статья посвящена анализу гигротермических характеристик плоских покрытий. Рассмотрена долговечность неветилируемых легких плоских крыш с использованием кровельных мембран в центрально-европейском климате.

**ВПЛИВ ПОКРІВЕЛЬНИХ МЕМБРАН НА ГІГРОТЕМАЛЬНІ
ХАРАКТЕРИСТИКИ ПЛОСКИХ ПОКРІВЕЛЬ, ЯКІ ВОКОНАННІ ІЗ
ДЕРЕВА**

Крістоф Бахбаум, Саймон Полити

Стаття присвячена аналізу гідротермальних характеристик плоских покрівель. Розглянута довговічність не вентильованих легких плоских покрівель з використанням покрівельних мембран для центрально-європейського клімату.